



Wild Chimpanzee Foundation®

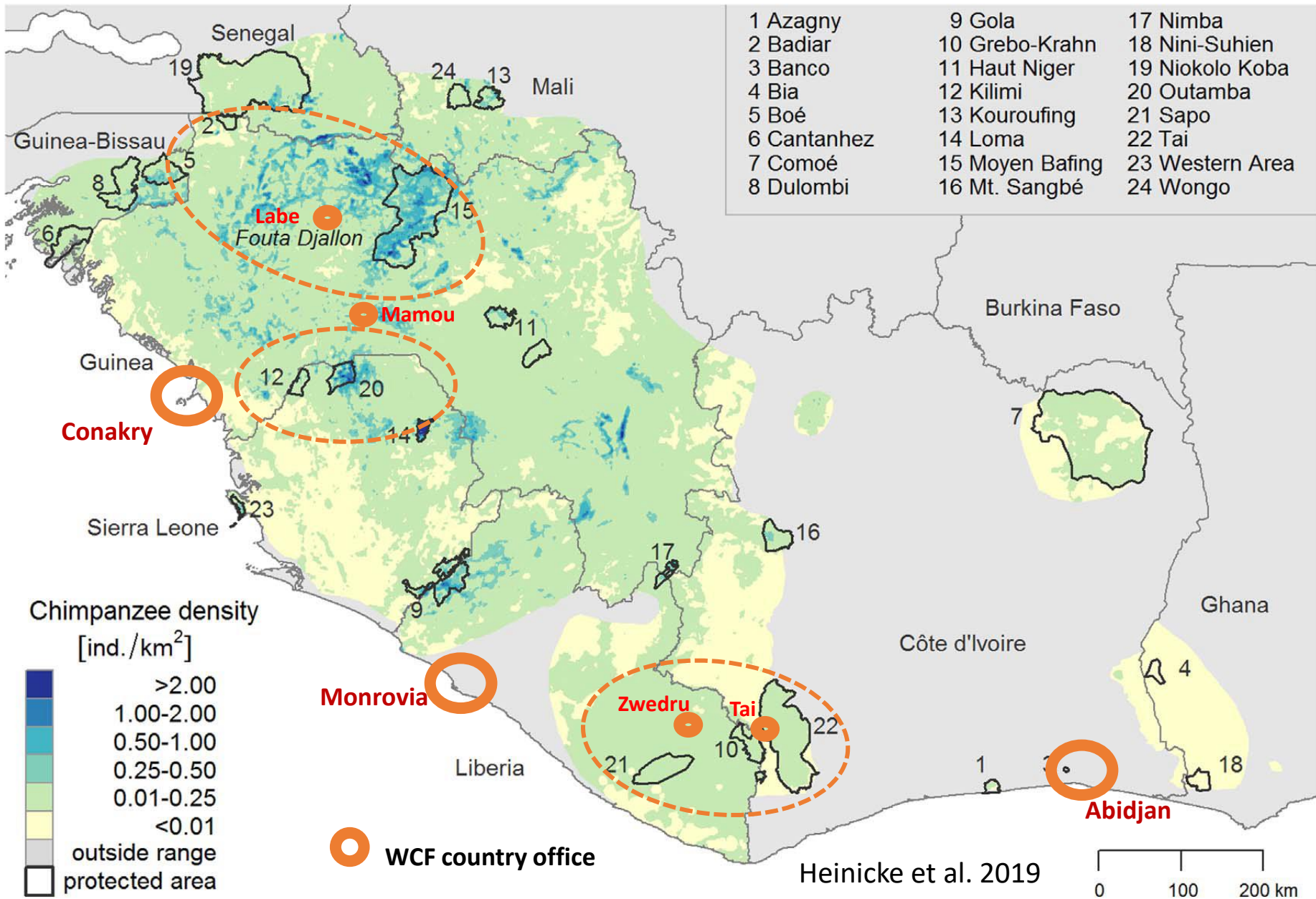
[www.wildchimps.org](http://www.wildchimps.org)

# Annual Report 2023



© Moyen-Bafing Chimpanzee Project

# Where we work and distribution of chimpanzees in West Africa



# Philosophy of the Wild Chimpanzee Foundation



91°F 32°C



05-14-2020 10:26:36

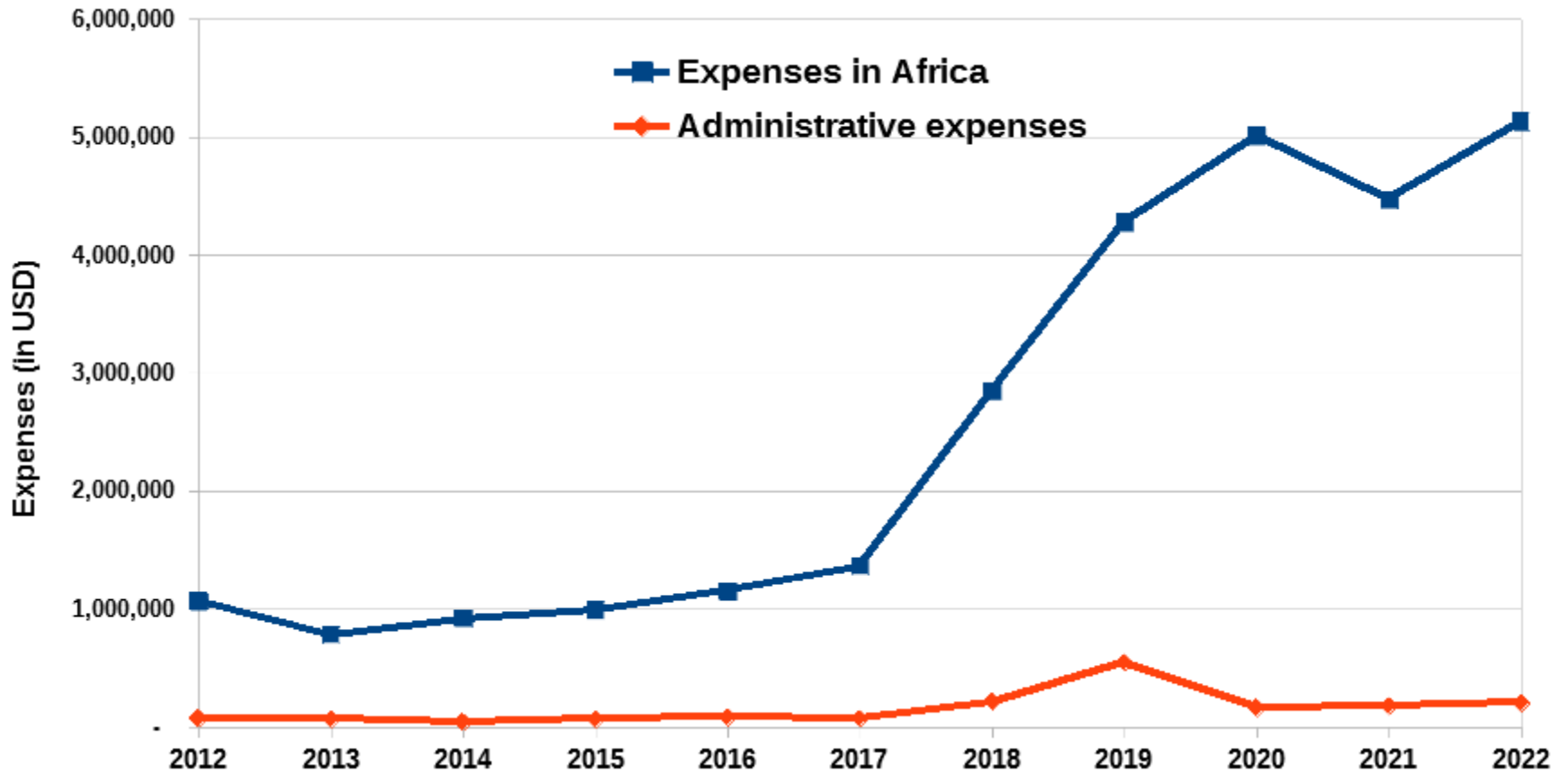
- Work to improve the future for the chimpanzees and their habitat,
- Support the local authority's goal of increasing protected areas,
- Support and empower the local communities to develop climate-intelligent activities.

## Achievements of the Wild Chimpanzee Foundation

- **2018:** Creation of the Grebo Krahn National Park, Liberia
- **2021:** Creation of the Moyen-Bafing National Park, Guinea
- **2023:** Creation of the Cavally Nature Reserve, Côte d'Ivoire
- **2024:** Planned creation of the Kwa National Park, Liberia
- **2024:** Planned creation of the Penselli-Soyah-Sabouyah National Park, Guinea



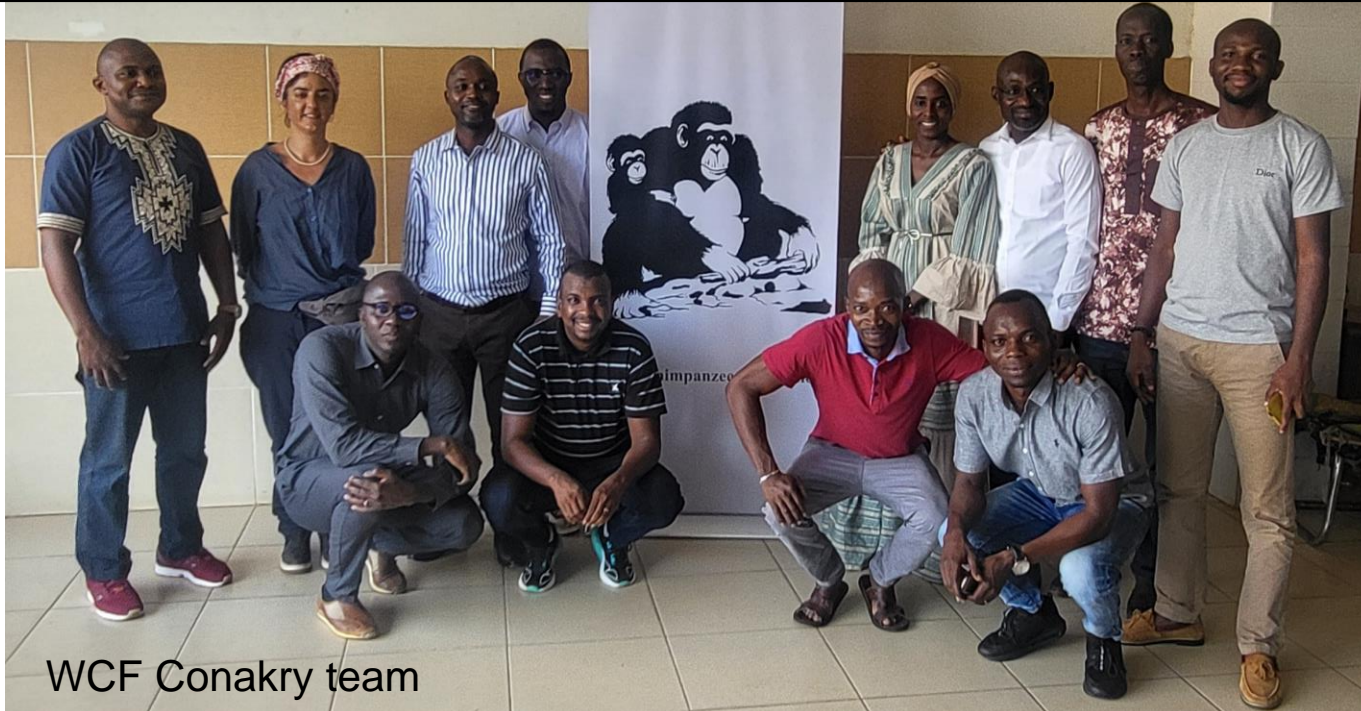
# WCF budget development



## WCF's main conservation activities

	Moyen-Bafing National Park	Penselli-Soyah-Sabouyah National Park	Outamba National Park	Grebo-Krahn National Park	Kwa National Park	Sapo National Park	Tai National Park	Cavally Nature Reserve
<u>Environmental activities</u>								
Biomonitoring	+	+	+	+	+		+	+
Ecogard program	+	+	+	+	+	+	+	+
Forest regeneration	+	+	+					+
Water source	+	+	+					
Wildfire control	+	+	+					
Law enforcement	+	+		+	+			+
Mitigation hierarchy	+	+						
<u>Socio-economic activities</u>								
Community empowerment	+	+	+					
NTFP support (honey, shea nut...)	+	+	+	+	+		+	+
Ecotourism						+	+	
Climate-smart agriculture	+	+	+				+	
Research	+	+					+	

# WCF Guinea

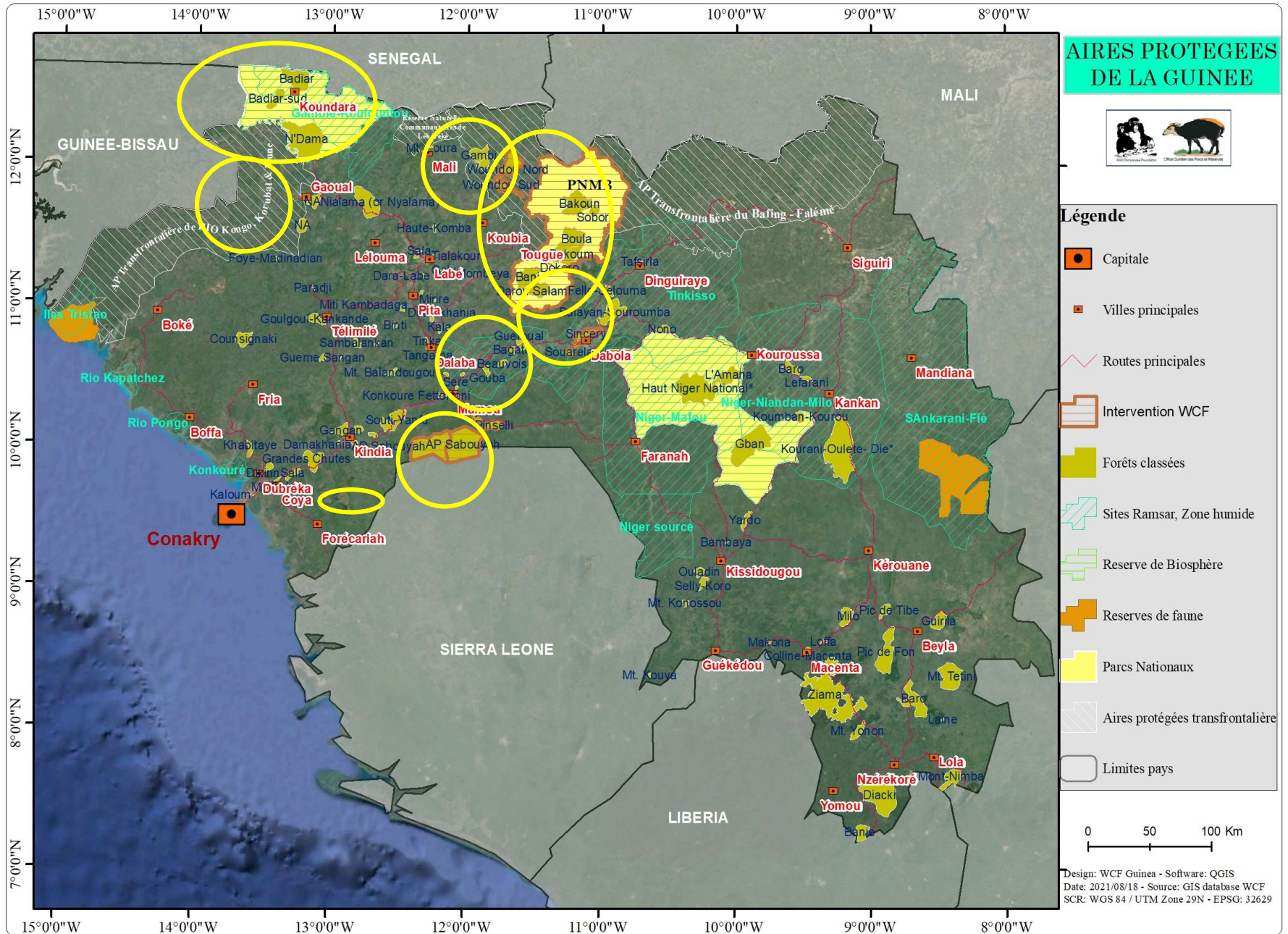


WCF Conakry team



WCF Conakry and Mamou team

# WCF Guinea – Project locations

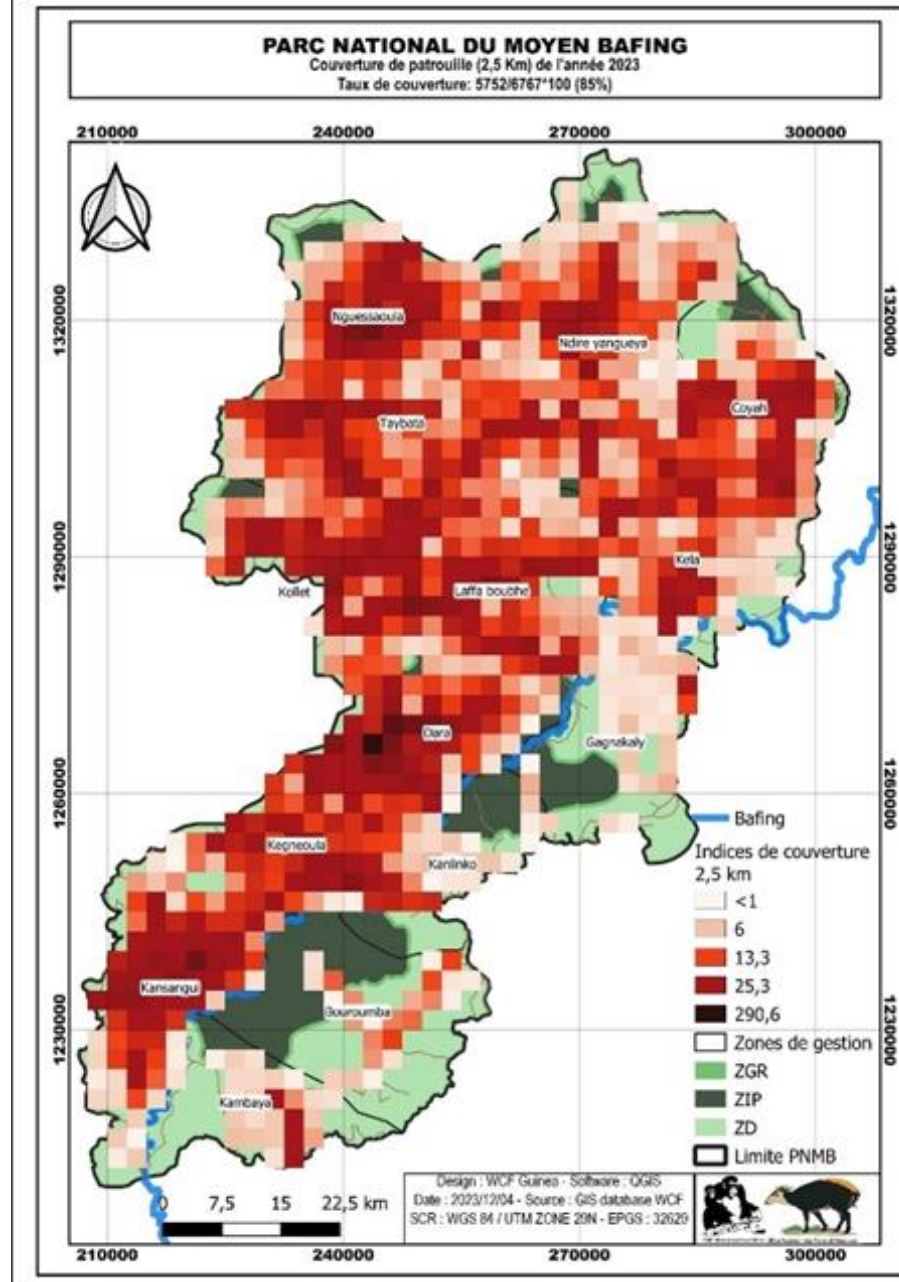




# WCF Guinea - Moyen Bafing National Park

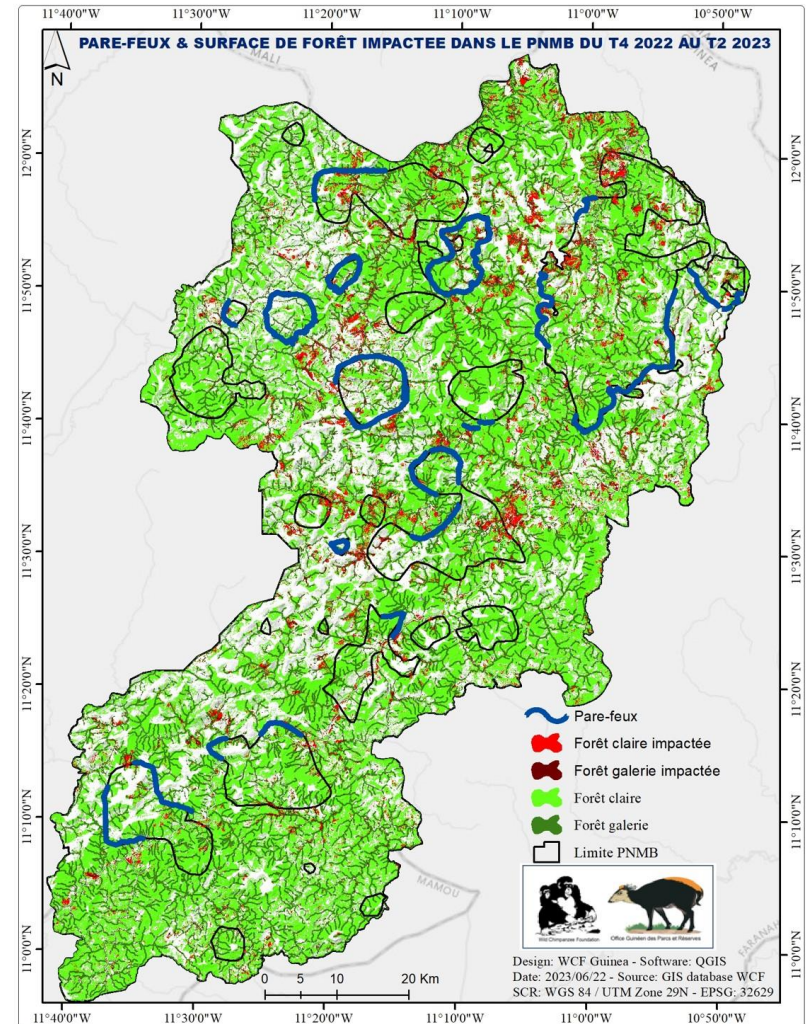
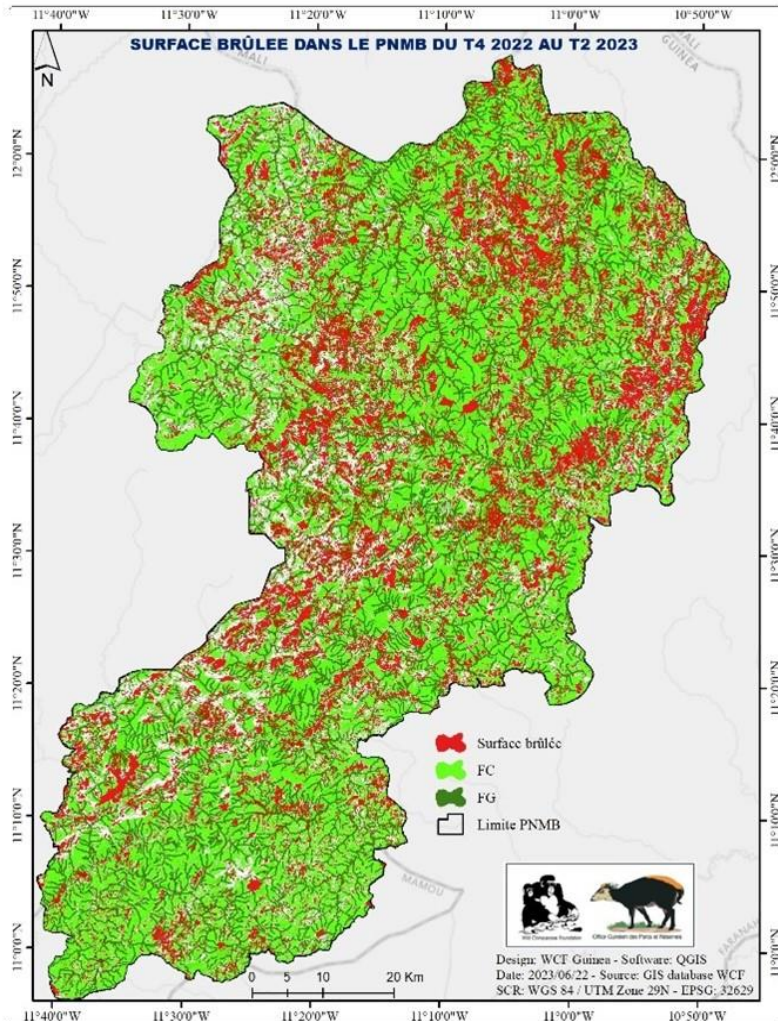
## Monthly surveillance patrols

- 106 patrols conducted corresponding to 20,702 km;
- 85% of the park covered by patrols;
- 67,267 observations of wild animals;
- 1,855 signs of illegal human activities.



# WCF Guinea - Moyen Bafing National Park - Fire management

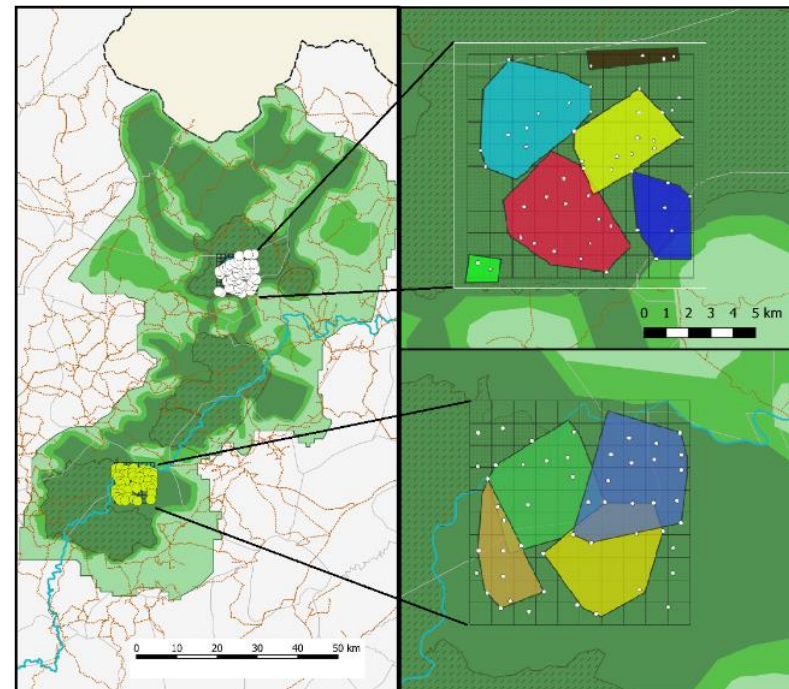
- 639 km of firebreaks opened with the involvement of 4,131 community members, 1,214 prescribed fires conducted;
- 21.9% of the Moyen Bafing National Park burned in 2022-2023 (compared to 31.2% last year);
- 92% of gallery and open forests protected from wildfire in 27 High Conservation Value areas and within the entire Moyen Bafing National Park.



# WCF Guinea - Moyen Bafing National Park

## Wildlife monitoring

- **Distance Sampling** (215 camera-traps):
  - 83,834 videos recorded from 46 animal species (since 2018);
  - **3,246 chimpanzees in the Moyen Bafing National Park (range = 2,186 to 4,854)** with an estimated density of 0.74 ind./km<sup>2</sup> (range = 0.50 – 1.11 ind./km<sup>2</sup>).
- **Capture and Recapture** (106 camera-traps):
  - 6 chimpanzee groups (with all group members identified) identified;
  - another 5 chimpanzee groups detected, but additional data needed.
  - first publication: Debetencourt et al. 2023. *Camera traps unveil demography, social structure and home range of six unhabituated West African chimpanzee groups in the Moyen Bafing National Park, Guinea*. International Journal of Primatology.



# WCF Guinea - Moyen Bafing National Park

## Community-based management

- 4,981 community members in village committees;
- 13 Village Land Management Plans (VLMP) finalized;
- 2,163 people organized into 72 cooperatives for vegetable gardening, agriculture, apiculture, and shea butter production;



## Vegetable gardening (337 fields in 26 villages)

Market gardening	Productivity (ton/ha)			
	2020	2021	2022	2023
Onion	8.78	0.58	2.99	3.71 (58t)
Eggplant	2.37	1.57	1.60	0.22 (533kg)
Okra	2.35	0.85	7.44	11.41 (2.51t)
Chili pepper	2.38	1.60	0.64	0.90 (4.7t)
Tomato	1.60	1.00	2.62	3.25 (256kg)



# WCF Guinea - Moyen Bafing National Park

## Apiculture

- 255 Kenyan beehives provided to “Groupement d’Intérêt Économique” members;
- 188/255 Kenyan beehives inhabited so far (74%);
- 1,179 liters of honey produced from 120 eco-responsible Kenyan beehives (compared to only 30 Kenyan beehives last year).



## Farmer-managed natural regeneration

- 67 FMNR fields in 26 villages totaling 37.16 hectares and managed by 237 farmers.



Farmer-managed natural regeneration	Productivity (ton/ha)			
	2020	2021	2022	2023
Rice	1.38	0.73	0.68	(1.2t)
Maize	0.59	0.14	1.08	(4.9t)
Fonio	1.01	0.94	0.74	(14.3t)
Peanut	1.05	1.08	0.95	(20.2t)
Sorghum	0.49	1.38	1.27	(2.6t)

# WCF Guinea - Moyen Bafing National Park

## Awareness raising and environmental education

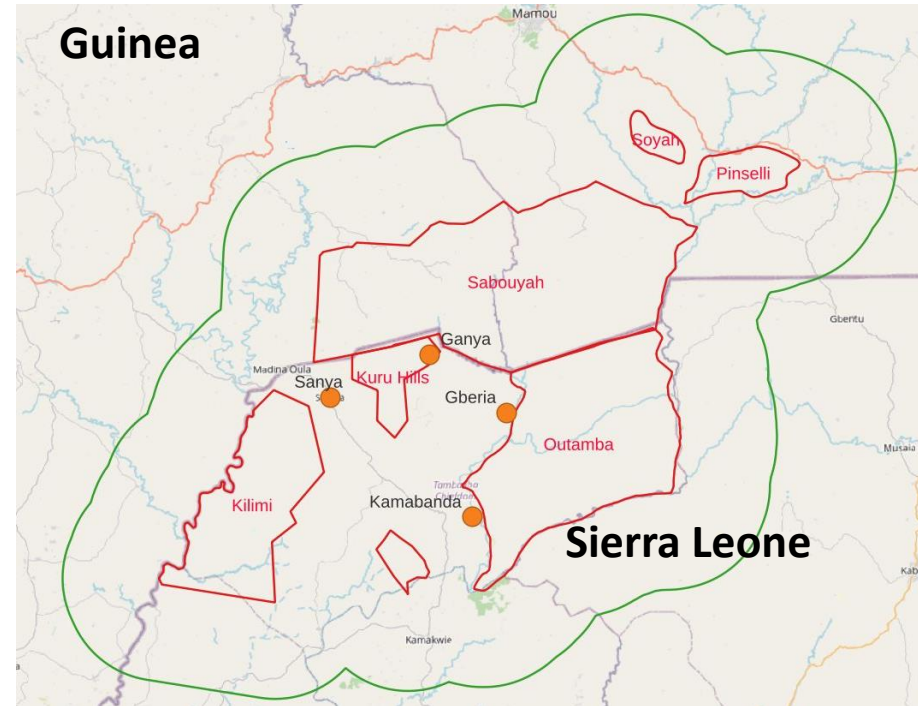
- *Cercles d'écoute*: 1,794 people;
- Club PAN: 900 children in 10 schools;
- 492 radio programs;
- 21 articles published online.



# WCF Guinea - OKKPSS Landscape Outamba-Kilimi-Kuru Hills-Pinselli-Soyah-Sabouyah

## Surveillance patrols and law enforcement

- Guinea: 39 patrols conducted by WCF ecoguards + Office Guinéen des Parcs Nationaux et Réserves de Faune(OGPNRF) agents, on 4,297 km.
- To enhance the surveillance and law enforcement, 17 OGPNRF were assigned to the future Pinselli-Soyah-Sabouyah National Park on the 1<sup>st</sup> of June 2023 by Ministère de l'Environnement et du Développement Durable (MEDD);
- Sierra Leone: 60 patrols conducted by Tacugama Chimpanzee Sanctuary ecoguards + National Protected Area Authority rangers, corresponding to 1,108 km.

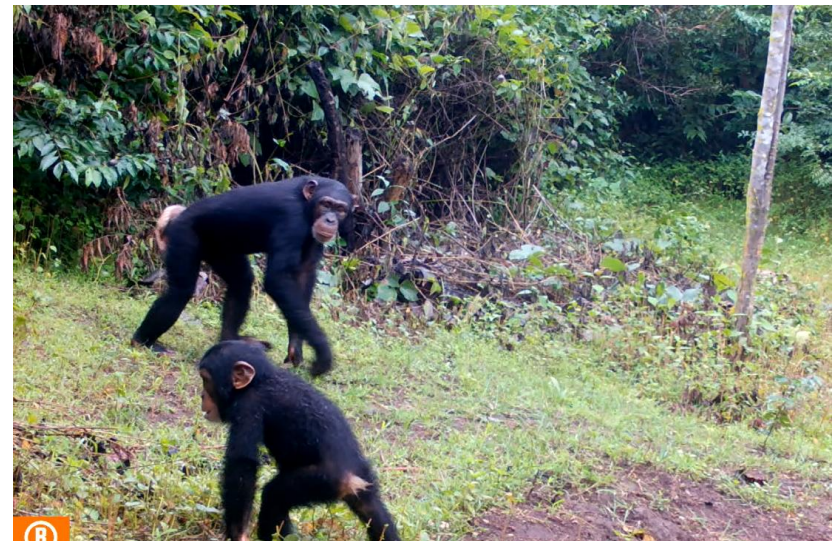
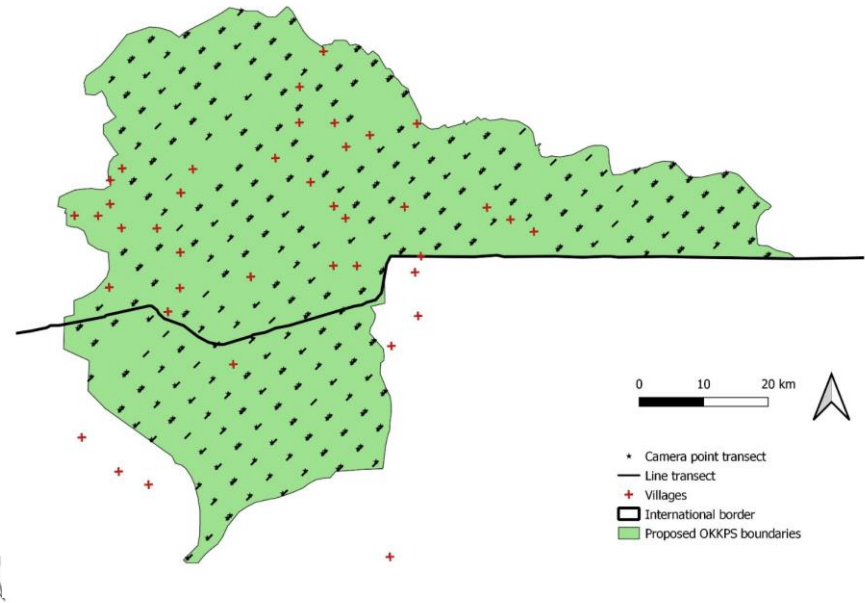
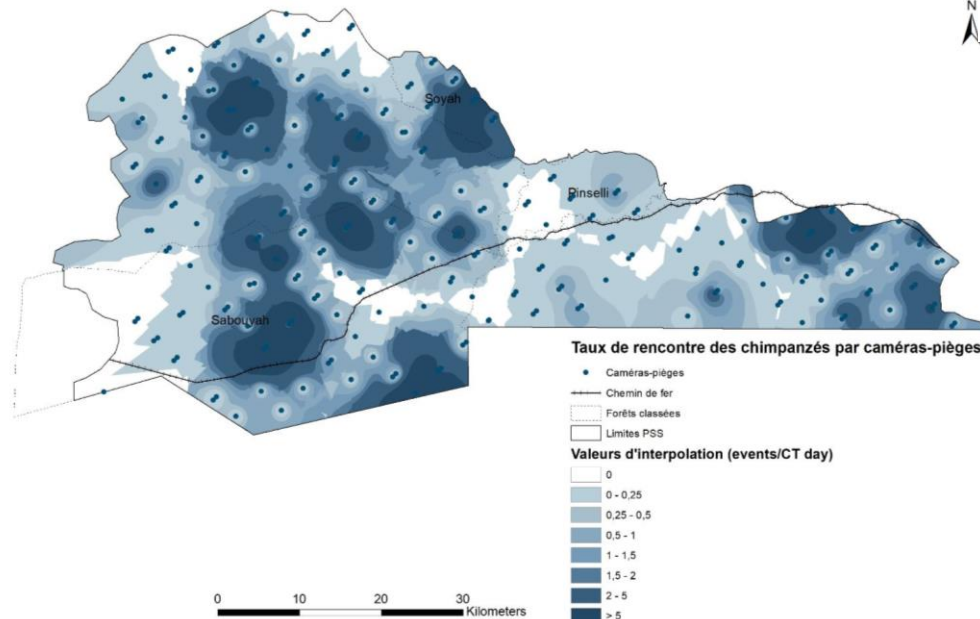


# WCF Guinea – future Pinselli-Soyah-Sabouyah National Park

## Wildlife monitoring

### *Distance Sampling*

Guinea: **1,945 chimpanzees** in the future Pinselli-Soyah-Sabouyah National Park in 2022 (range = 1,233 to 3,095) with an estimated density of 0.69 ind./km<sup>2</sup> (range: 0.44 – 1.09). Follow-up survey ongoing.



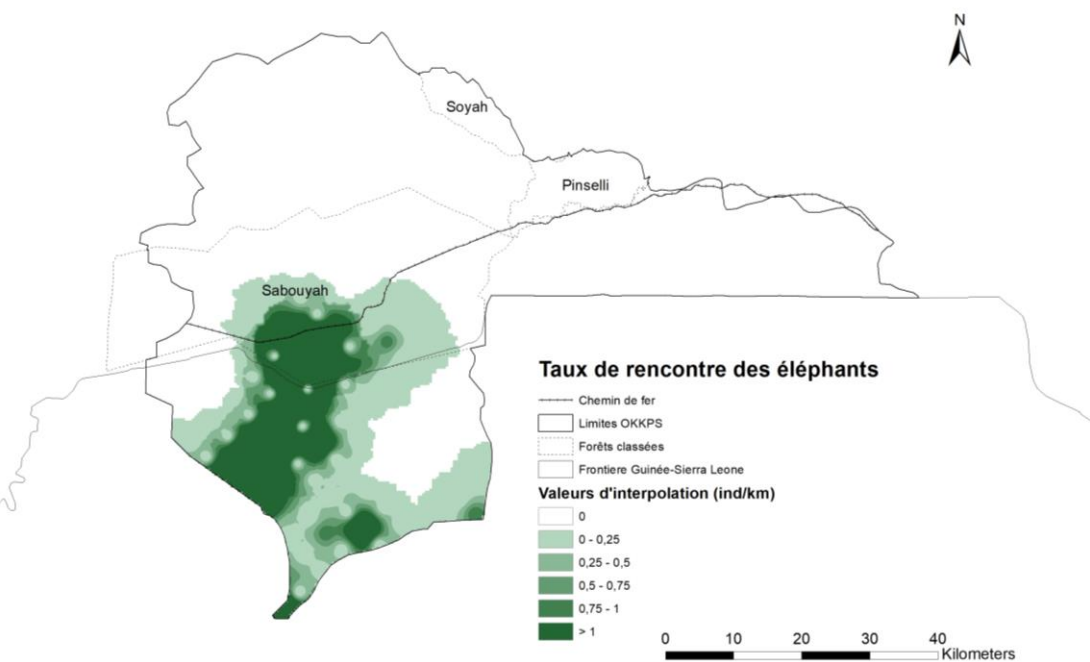
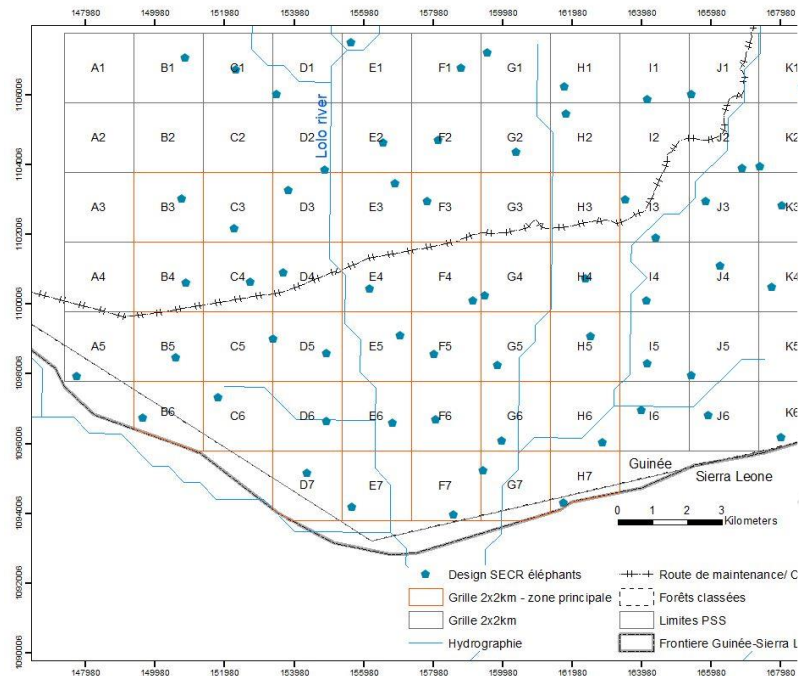


# WCF Guinea – future Pinselli-Soyah-Sabouyah National Park

## Elephant monitoring

### 62 camera-traps:

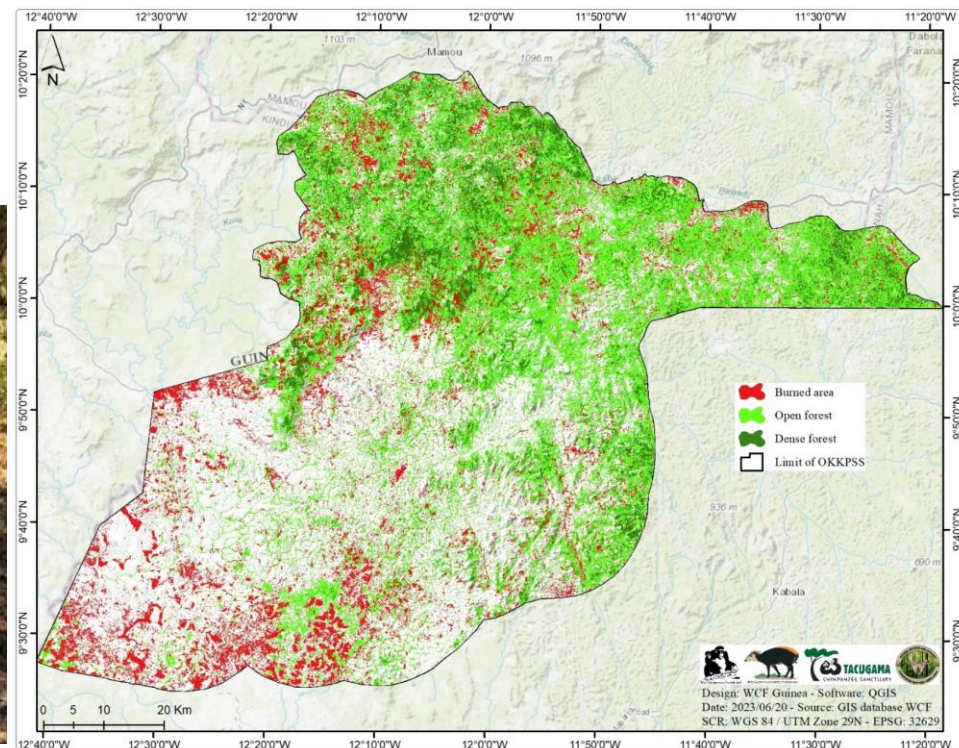
- Preliminary identification of **123 forest elephants from 18 groups** in the Sabouyah forest;
- Population previously unknown in Guinea, representing the only population of this species with a real chance of survival.



# WCF Guinea - OKKPSS Landscape Outamba-Kilimi-Kuru Hills-Pinselli-Soyah-Sabouyah

## Wildfire management

- 72 km of firebreaks created in Guinea and 155 km in Sierra Leone;
- 12.21% of the OKKPS landscape burned during the 2022-2023 fire season (11.34% of the proposed Pinselli-Soyah-Sabouyah National Park);
- 94.8 – 95.8 % of gallery and open forests protected from wildfires.



# WCF Guinea - OKKPSS Landscape Outamba-Kilimi-Kuru Hills-Pinselli-Soyah-Sabouyah

## Law enforcement capacity building

- 1 training on biomonitoring techniques in January 2023;
- 1 training on patrolling techniques in March 2023;
- 2 workshops on law enforcement in January and June 2023.
- A MOU was signed in May 2023 between Office Guinéen des Parcs Nationaux et Réserves de Faune and National Protected Area Authority (Sierra Leone), to enhance a transboundary cooperation in the protection and management of the OKKPSS landscape.



# WCF Guinea - OKKPSS Landscape Outamba-Kilimi-Kuru Hills-Pinselli-Soyah-Sabouyah

## Community-based management of the OKKPS landscape

- Guinea: 670 community members organized into 20 cooperatives;
- As part of the development of land use plans, 19 participatory maps were created;
- 4 community consultations to prepare municipality councils for the revision of local development plans.



- Sierra Leone: 499 community members organized in 10 community-based organizations;
- 1 participatory map created.



# WCF Guinea - OKKPSS Landscape Outamba-Kilimi-Kuru Hills-Pinselli-Soyah-Sabouyah



**Apiculture**



**Néré - Soumbara**



## **Socio-economic development**

Guinea: 670 people (incl. 340 women)  
Sierra Leone: 499 people (incl. 391 women)



# WCF Guinea – future Pinselli-Soyah-Sabouyah National Park

## Creation of the Pensilli-Soyah-Sabouyah National Park, Guinea

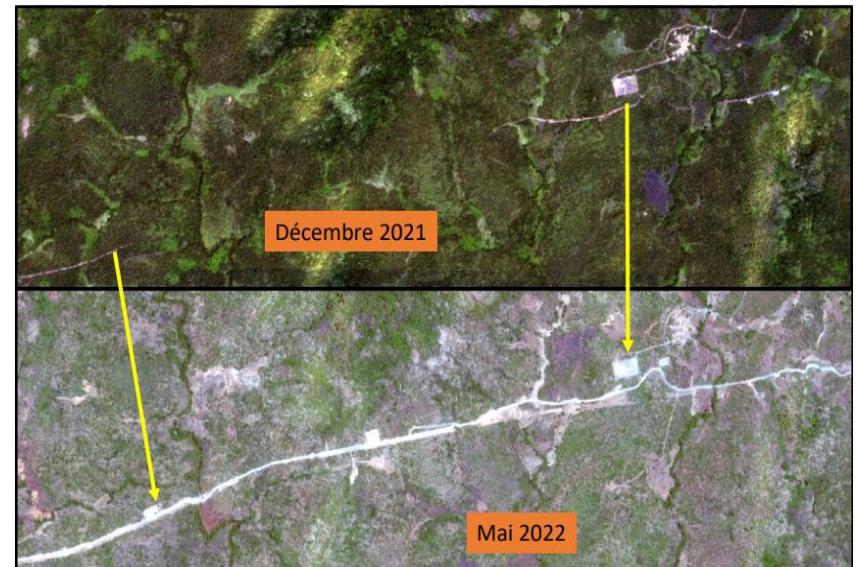
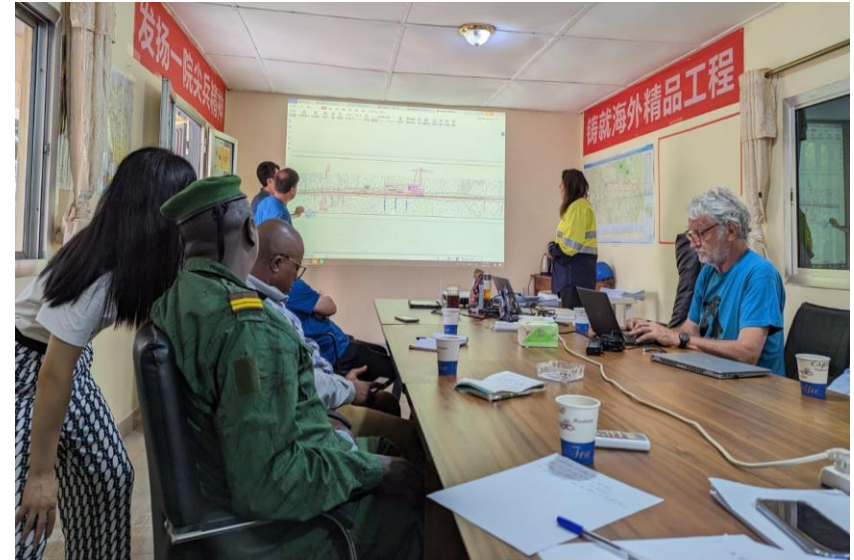
- Organization of the second and third community consultation meetings in May and October 2023 with local communities and regional, prefectural and sub-prefectural authorities;
- Presentation of the Pensilli-Soyah-Sabouyah National Park project and explain the Free Prior and Informed Consent process (FPIC) in the four communes of the future park, gathering 257 and 243 people.
- The external boundaries of the future park have been revised, and now include six municipalities (Madina Oula, Soyah, Ouré Kaba, Maréla, Linsan, and Konkouré) and a total provisional size of 3,156.06 km<sup>2</sup>.



# WCF Guinea – future Pinselli-Soyah-Sabouyah National Park

## Implementation of a mitigation strategy along the future railway line in the future Pinselli-Soyah-Sabouyah National Park

- Bi-monthly field visits at the railway construction sites to monitor and assess the implementation of the mitigation hierarchy and the ESMP of Winning Consortium Simandou/Rio Tinto;
- First annual report quantifying the environmental impacts of the railway construction produced by WCF (impacts on biodiversity and forest cover due to human immigration);
- 2 workshops organized in May and November 2023;
- Construction of 6 security checkpoints to further control human circulation and immigration.



# WCF Guinea – future Pinselli-Soyah-Sabouyah National Park

## Awareness raising and environmental education

### In Guinea

- *Cercles d'écoute*: 2,106 people;
- Club PAN: 267 children in 6 schools;
- First theatre tour: 1,972 people in 20 villages;
- 463 radio programs and 5 TV programs;
- 25 articles published online.

### In Sierra Leone

- Tacugama's Kids Environmental Education Programme was implemented in 6 schools and benefitted 210 children;
- 2,014 people were sensitized during awareness sessions on wildfires and deforestation.

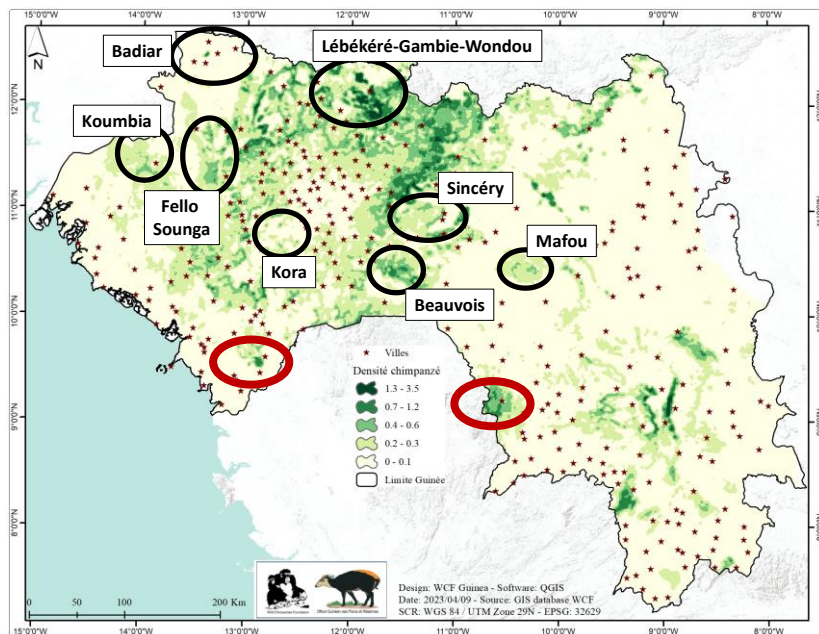




# WCF Guinea - Protection of Pinselli-Soyah-Sabouyah and chimpanzee offset project

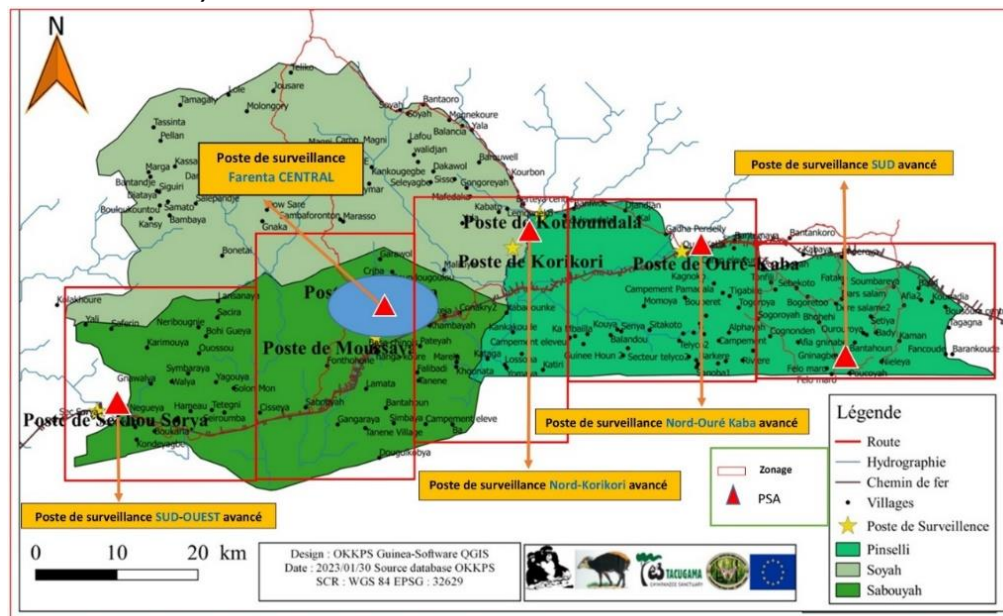
## Identification of potential chimpanzee offset sites in Guinea

- The impact of the Simandou project could reach over 2'000 chimpanzees;
- A few offset sites with healthy chimpanzee populations is necessary;
- Funded by Rio Tinto and WCSr (790,682.- USD)



## Surveillance and law enforcement enhancement in the proposed Pinselli-Soyah-Sabouyah National Park

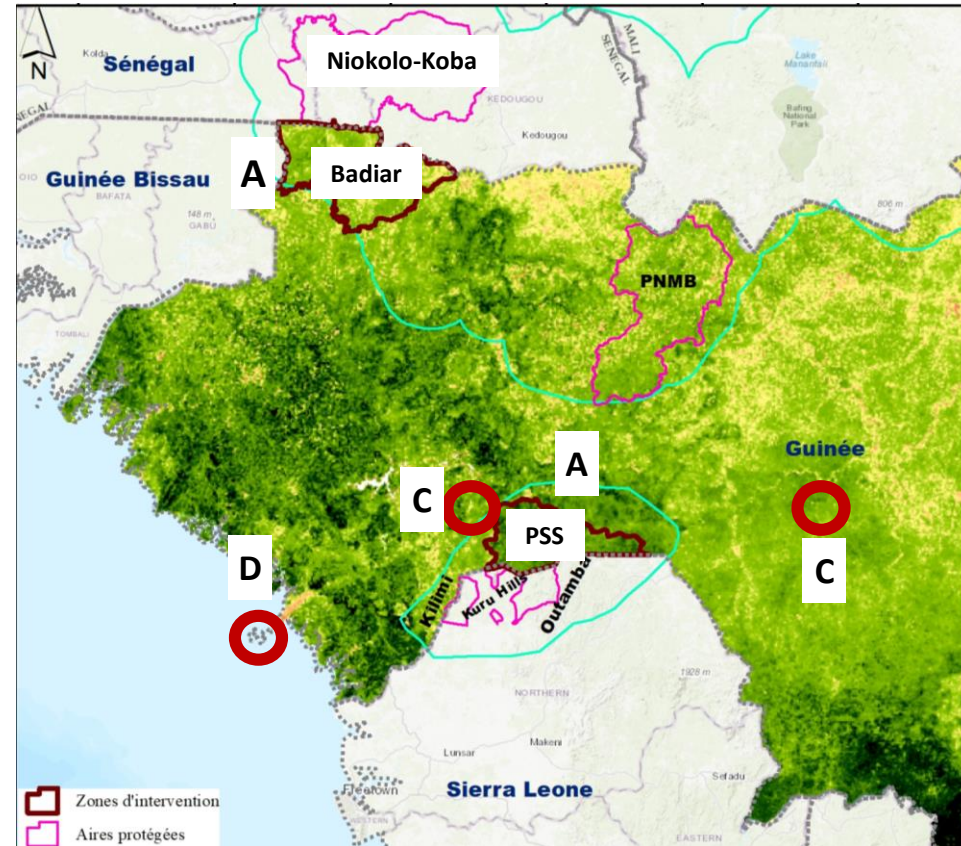
- To reduce the increasing human pressure on the future park due to the railway construction;
- Includes the construction of control points in the Pinselli-Soyah-Sabouyah forests;
- Funded by Rio Tinto and WCSr (1,046,505.- USD)



# WCF Guinea - EU NaturaGuinée – signed November 2023

EU funded – 4 years  
(13 million EUR)

- A. Creation and management of Badiar and Pinselli-Soyah-Sabouyah (PSS) National Parks;
- B. Combating wildlife crimes in Guinea;
- C. Creation and rehabilitation of animal sanctuaries;
- D. Rehabilitation of Conakry's botanical garden.



# WCF Côte d'Ivoire

57 persons, including 68% of green jobs created around protected areas

- 5 expatriates including 3 volunteers
- 3 administrative staff
- 4 program managers (Biomonitoring Cavally, Ecotourisme Taï, Biomonitoring Taï National Park and Independent monitoring)
- 17 ecoguards
- 22 ecoguides and assimilated for ecotourism in Taï including 1 PhD student
- 6 video analysts including 1 PhD student



WCF-Abidjan office



Video analysts WCF-Abidjan



WCF-Taï office



WCF-Taï (ecoguards, ecoguides, camp stewards)



Ecoguards WCF-Zagné

**Cavally Classified Forest  
upgraded to  
Cavally Nature Reserve  
in September 2023**



# WCF Côte d'Ivoire – Cavally Nature Reserve

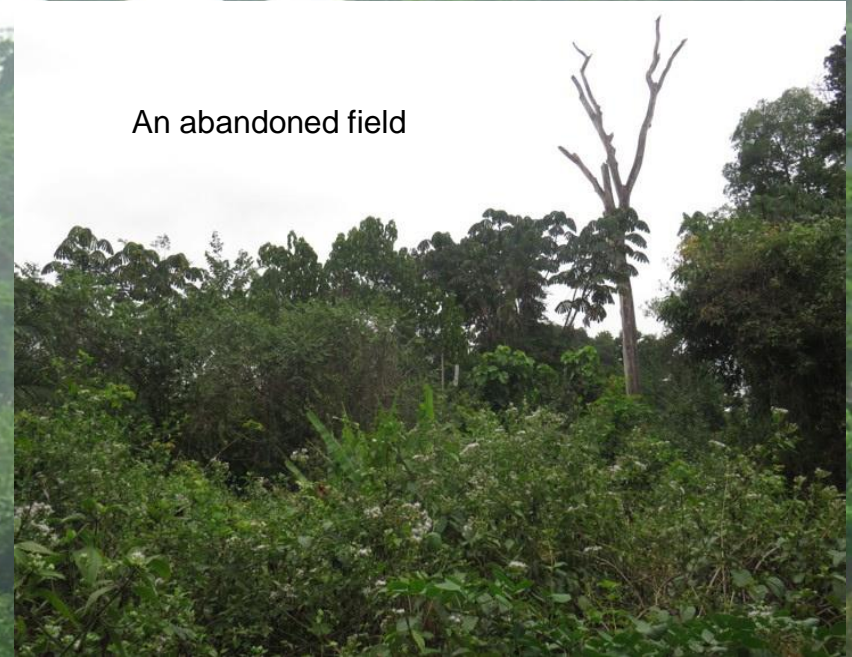
## Cavally forest gradually regenerates (Results from satellite picture analysis)

Vegetation type	Proportion
Forest (mostly secondary)*	59,95%
Abandoned fields	18,34%
Plantations / Crops (of which 51% is untended**)	21,60%
New forest clearings	0,11%

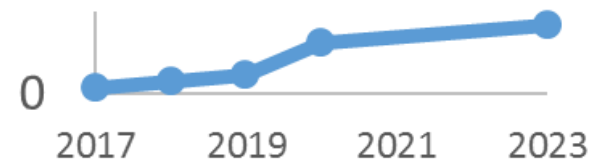
\* Abandoned fields for 3 or more years are included in the forest category.

\*\* Untended plantations can quickly be cleared again by the planters.

An abandoned field



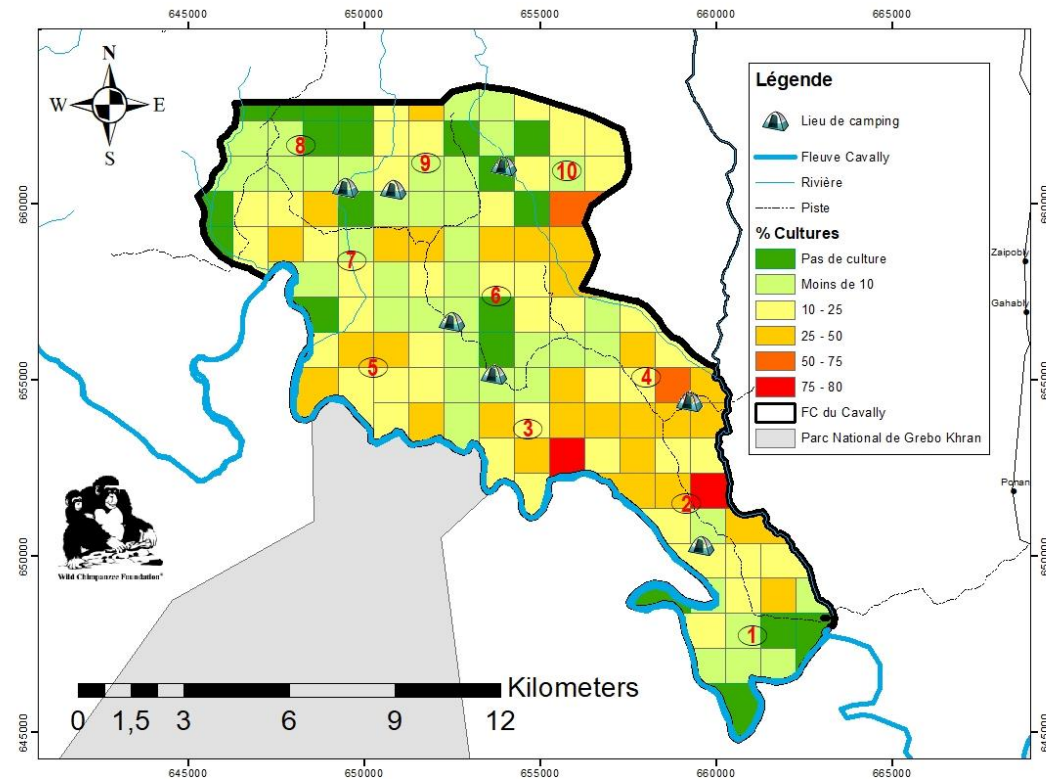
## % Abandoned farms



# WCF Côte d'Ivoire – Cavally Nature Reserve

## Activities implemented to facilitate Cavally forest regeneration

1. **Orienting patrols** in the southern Cavally forest protection zone **to create a wildlife refuge**;
2. **Patrolling** : 1653.39 km walked from December 2022 to June 2023;
3. **Cutting strategically cocoa using SMART data** (red and orange cells in the map on the right);
4. **Biomonitoring with camera traps** in progress.



## Activities implemented to facilitate forest regeneration

### 5. Discourage local and international buyers to buy cocoa from Cavally forest

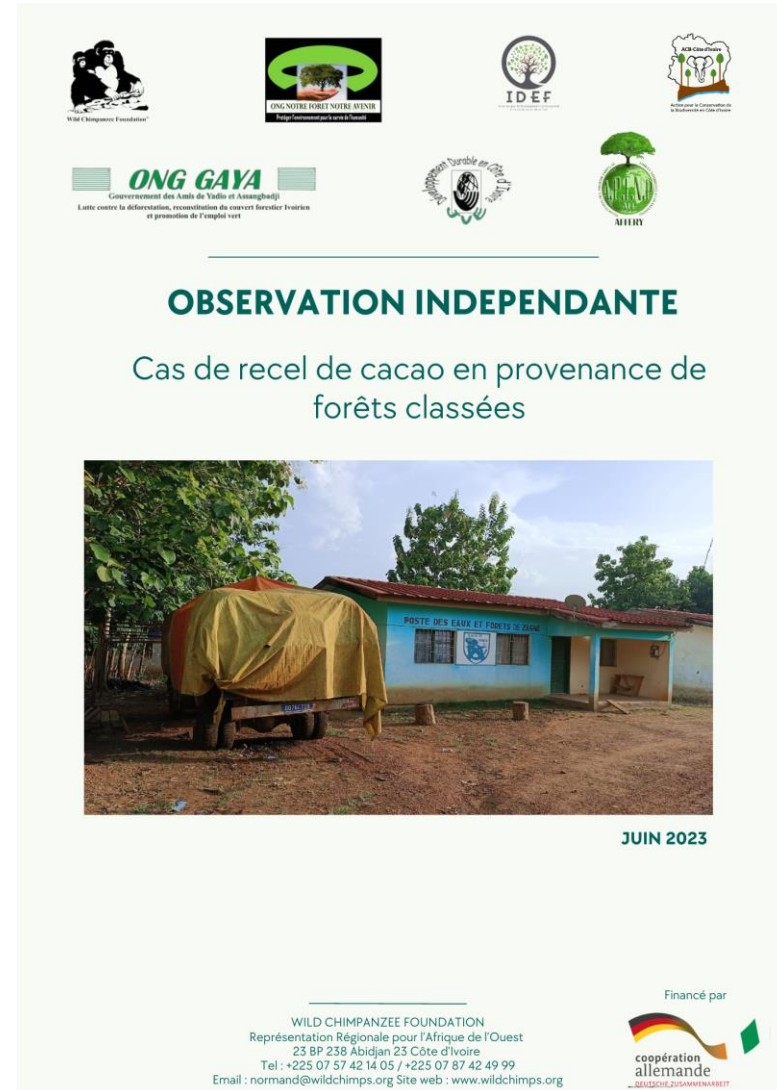
- through independent investigations
- using the new EU regulation on deforestation-free products

### 6. Orienting law enforcement

- A thematic legal note in development with the Guiglo tribunal to qualify the purchase of cocoa from classified forests as concealment of illicit products

### 7. Raising awareness in camps neighbouring Cavally forest

- 17 camps and 218 participants in 2023



The infographic features logos for Wild Chimpanzee Foundation, ONG NOTRE FORET NOTRE BIEN, IDEF, Association de Conservation de la Biodiversité de Côte d'Ivoire, ONG GAYA, and NIERI. Below the logos, the text reads: 'OBSERVATION INDEPENDANTE' and 'Cas de recel de cacao en provenance de forêts classées'. A photograph shows a blue building with a sign 'POSTE DES CAUX ET FORÊTS DE CAUX' and a truck covered in a yellow tarp in front of it. The date 'JUN 2023' is printed below the photo. At the bottom, contact information for Wild Chimpanzee Foundation is provided, along with the German-Ghanaian cooperation logo.

**ONG GAYA**  
Gouvernement des Amis de Yadio et Assangbedji  
Lutte contre la déforestation, reconnaissance de nouveaux itinéraires touristiques et promotion de l'emploi vert

**OBSERVATION INDEPENDANTE**

Cas de recel de cacao en provenance de forêts classées

JUN 2023

Financé par  
coopération allemande  
DEUTSCHE ZUSAMMENARBEIT

WILD CHIMPANZEE FOUNDATION  
Représentation Régionale pour l'Afrique de l'Ouest  
23 BP 238 Abidjan 23 Côte d'Ivoire  
Tel : +225 07 57 42 14 05 / +225 07 87 42 49 99  
Email : normand@wildchimps.org Site web : www.wildchimps.org

# WCF Côte d'Ivoire – Biomonitoring in Taï National Park

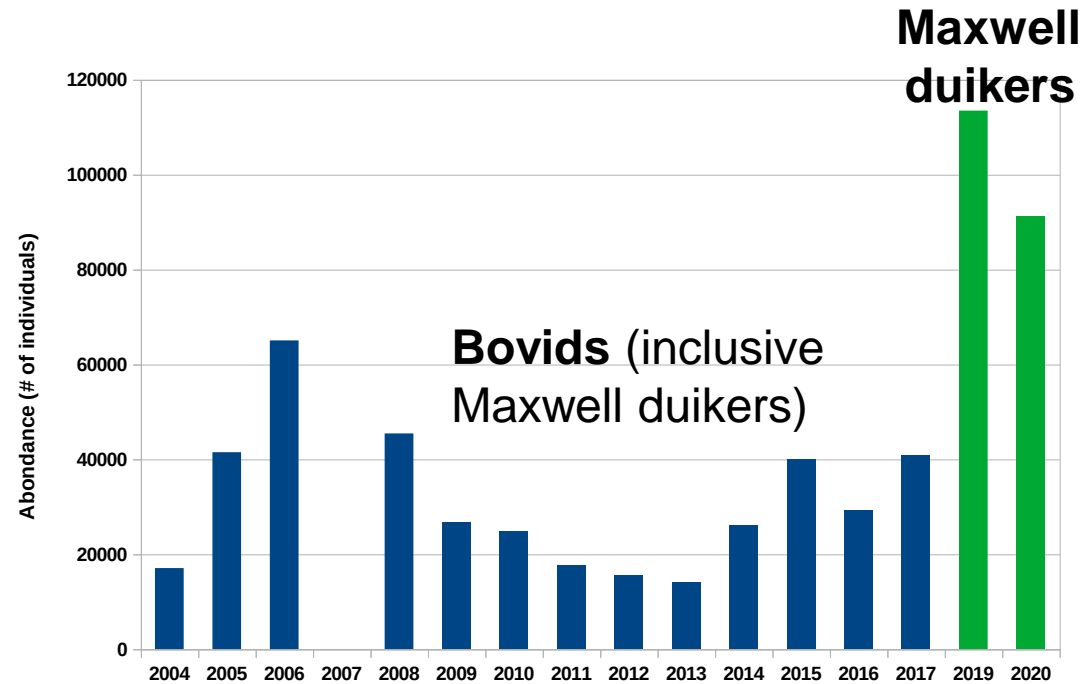
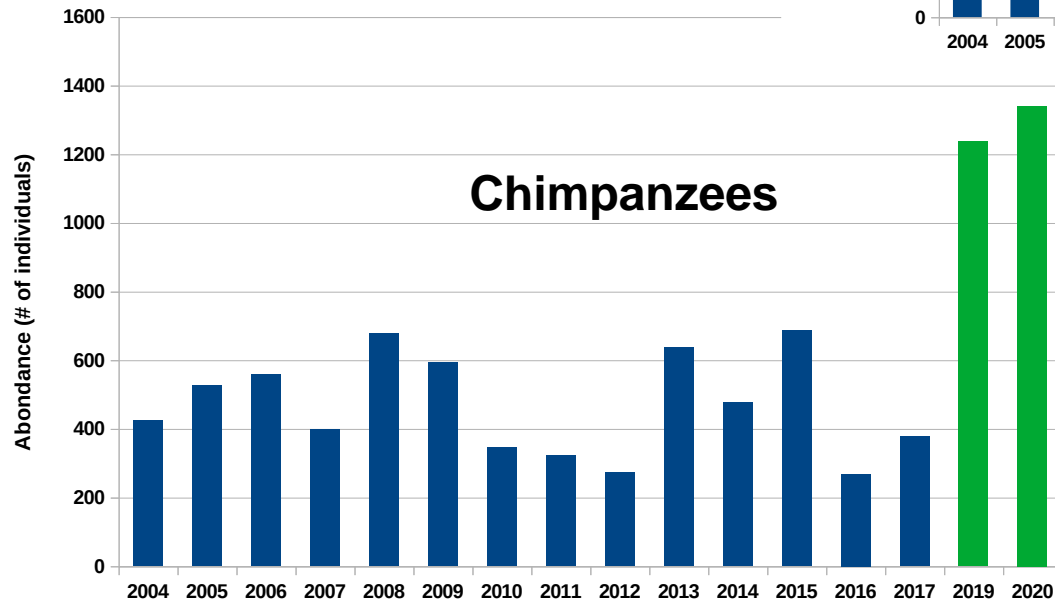




# WCF Côte d'Ivoire – Biomonitoring in Taï National Park

## Long-term monitoring study of animal species in Taï National Park

- Population size fluctuations occur between years;
- Large differences due to change in methodology;
- Camera traps with direct observations could be more reliable.



Blue bars: Data from Line Transects

Green bars: Data from camera traps

# WCF Côte d'Ivoire – Biomonitoring in Taï National Park

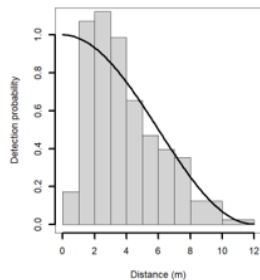
## ZAMBA (AI)

Comparison of data analysis manually versus with Zamba ([www.zambacloud.com](http://www.zambacloud.com)) in the Taï National Park.

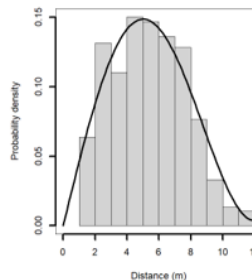
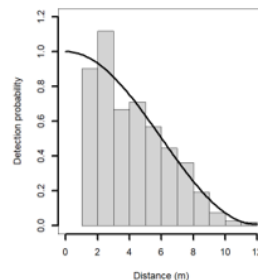
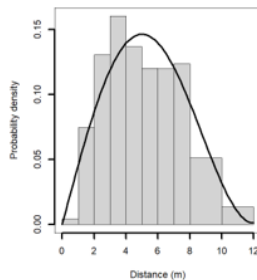
- Allows to automatically identify species, but needs to be trained to recognize e.g. different duiker species and increase accuracy at each camera trap point;
- Can be used to automatically estimate radial distances.

=> WCF tested with one species that does not react to the cameras, is abundant, and travels as 1 or 2 individuals = Maxwell's duiker.

Dataset	Time to estimate radial distances	Category	Estimate	LCI	UCI	CV
Zamba Distances	~ 3hrs	Density	22,1	17,9	27,3	10
Manual Distances	96 working days =768h	Abundance	118534	96166	146103	10
Zamba Distances		Density	21,2	17,8	25	10
Manual Distances		Abundance	113604	91248	131674	10



Manual



Zamba



Maxwell's duikers – TNP Phase 1

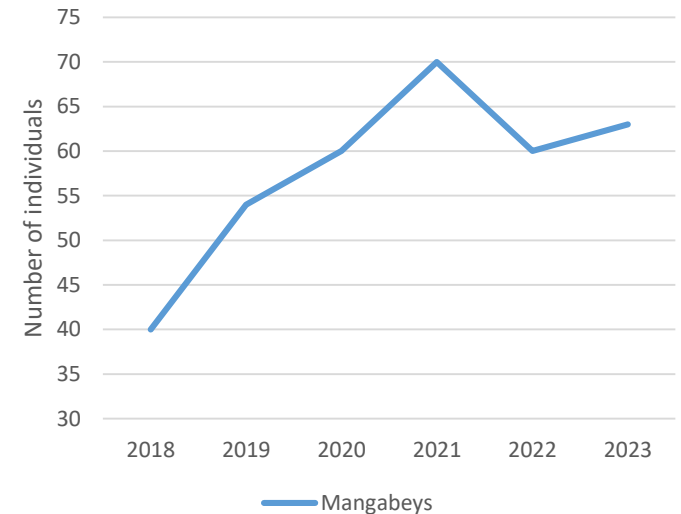
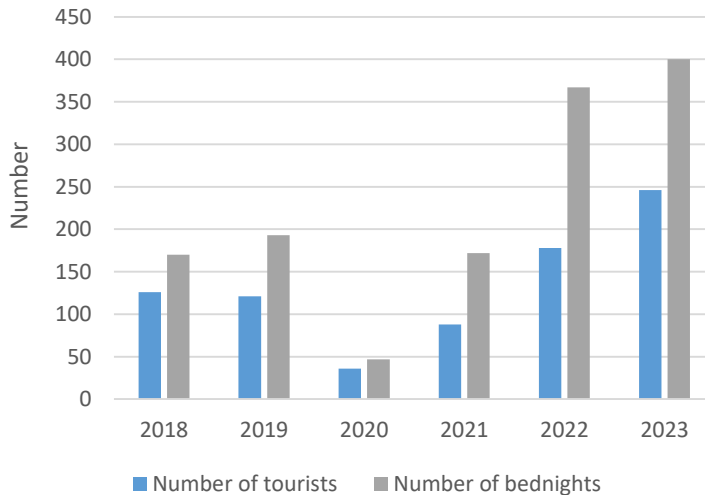
Human video analysts take 768h to analyze the same dataset that Zamba does in 3h. Zamba speeds the analysis up by 256 times.

# WCF Côte d'Ivoire – Ecotourism Taï



## Ecotourism in numbers for 2023

- 246 tourists in 2023 (178 in 2022),
  - ➔ 34 060 000 FCFA ( 51 921 Euros)
  - ➔ 400 bed/nights – 33% of the bed/nights expectations
  - ➔ 95% tourist satisfaction
  - ➔ A new team since October 2023



The **sooty mangabeys** are followed the full day from the time they wake up until they sleep. On average the group is successfully followed 29 days/month. 63 individuals were followed this year.

# WCF Côte d'Ivoire – Ecotourism Taï

## Ecotourism project benefits communities through:

### 1. Regular income

- 26 employees in the ecotourism project;
- 25 direct beneficiaries of ecotourism initiatives (€4331; cocoa, culture stay in Daobly)
- 50% are women

### 2. Opportunities to develop new initiatives

- Art & crafts, beekeeping, cocoa products, permaculture, fabric creations, etc.

### 3. Awareness raising at Taï Ecomuseum

- 2180 visits to the ecomuseum, mainly by schoolchildren, 48% of whom were girls → 130% increase in attendance in 2023

People engaged	Total	Women
Residents directly paid by the ecotourism project		
Ecoguides	11	7
Ecoguards	6	2
Camp stewards	4	3
Office staff	5	1
Residents benefiting from ecotourism projects		
Culture stay in Daobly	20	10
Permaculture	1	1
Cocoa processing	1	1
Beekeeping	3	0
Residents benefiting from tourist arrivals		
<b>Total</b>	<b>53</b>	<b>25</b>



# WCF Côte d'Ivoire – Ecotourism Taï



## Ecotourism project benefits park patrolling

- **Recruitment** of a new **mixed** team of 6 ecoguards for the ecotourism zone.
- Collaboration with TCP's team of 4 ecoguards patrolling the research area.
  - ➔ 500 km<sup>2</sup> covered
  - ➔ 0.39 signs of illegal activity /km travelled.

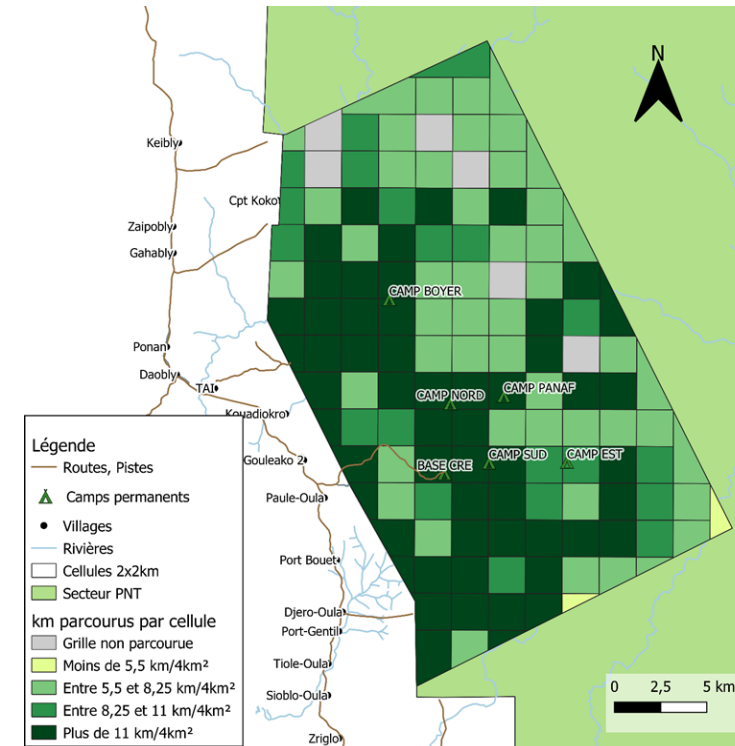


Figure 1 : Carte de l'effort total de patrouille sur chaque grille de la zone d'étude

## 4 approaches

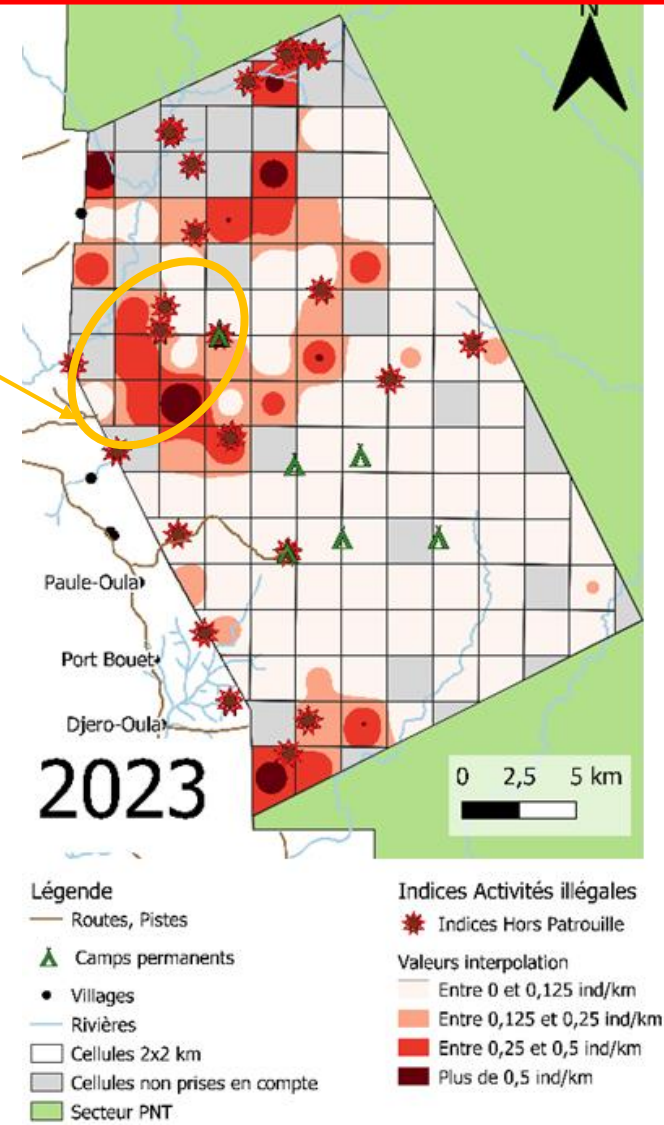
- Recce patrols, 123/132 grids surveyed, **1073 km** walked,
- Patrol along poachers' trails, **22 traps** destroyed,
- **Night patrols** around ecotourism camp (3 missions carried out, 10 shots heard at night),
- **cameras trap** installation to reinforce OIPR's biomonitoring design.

# WCF Côte d'Ivoire – Ecotourism Taï

## Ecotourism project benefits chimpanzee conservation

- Decision to habituate a chimpanzee group located **2-5 km from the park border** where **poaching is still high** to ensure their survival thanks to permanent presence.
- **4 times more patrols** from ecoguards in the group's estimated territory.
- Observation of at least **5 adult males** and **3 females** that are beginning to be identified.
- **Camera traps** set up on strategic points like nut cracking sites to facilitate identification.

Area of chimpanzee territory being habituated in the ecotourism zone



# WCF Liberia

- 3 offices: Monrovia, Zwedru, Sapo NP;
- 37 staff members, 4 expats;
- 11 long-term interns;
- 94 community ecoguards/tourist guides SE Liberia;
- 70 community ecoguards NW Liberia;
- 40 biomonitors.



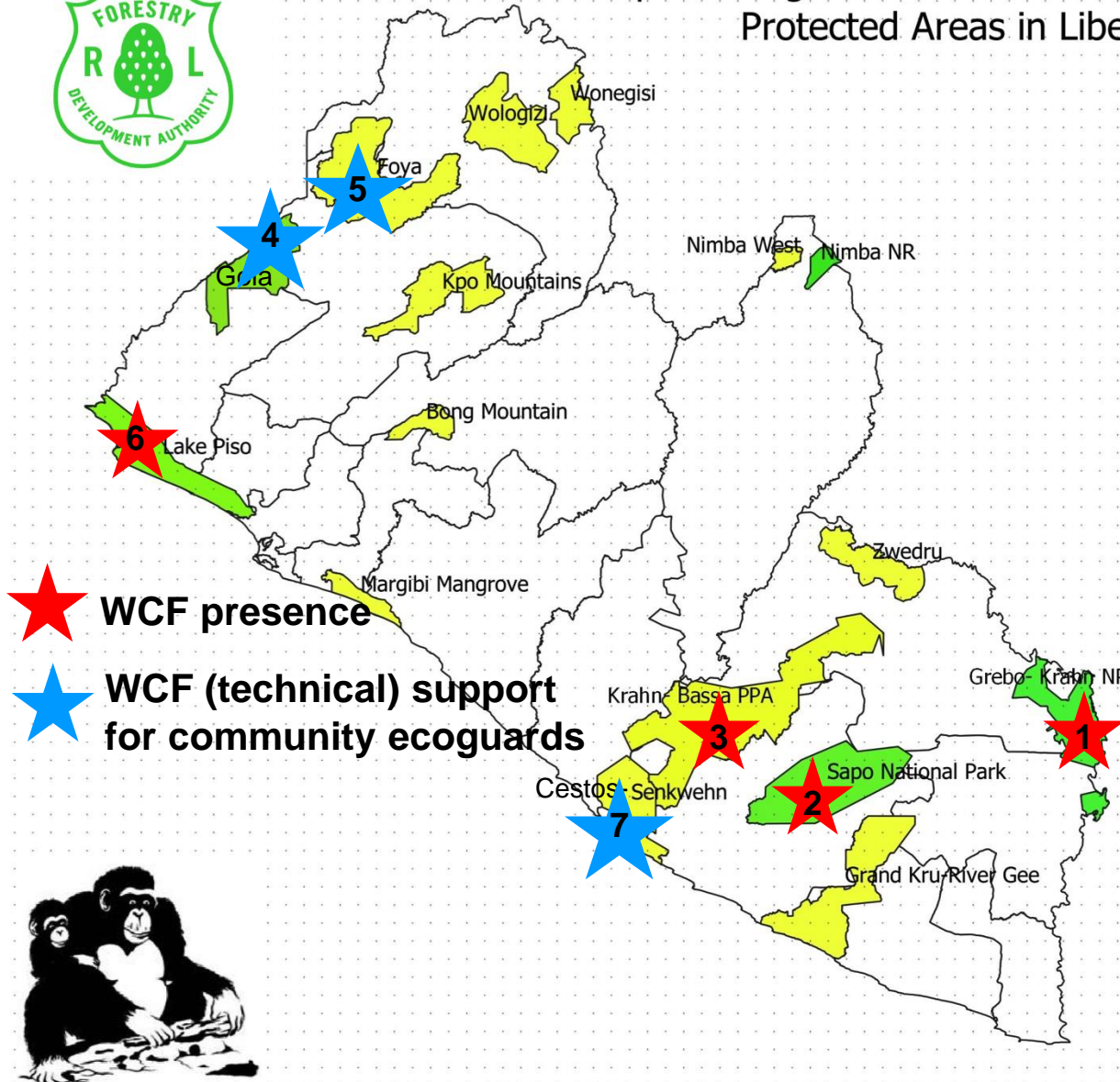
# WCF Liberia - Locations of the WCF activities



Map showing Protected Areas and Proposed Protected Areas in Liberia

Protected Area

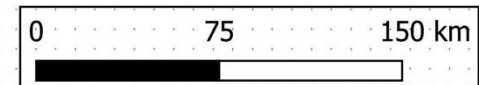
Proposed Protected Area (PPA)



 **WCF presence**

 **WCF (technical) support for community ecoguards**

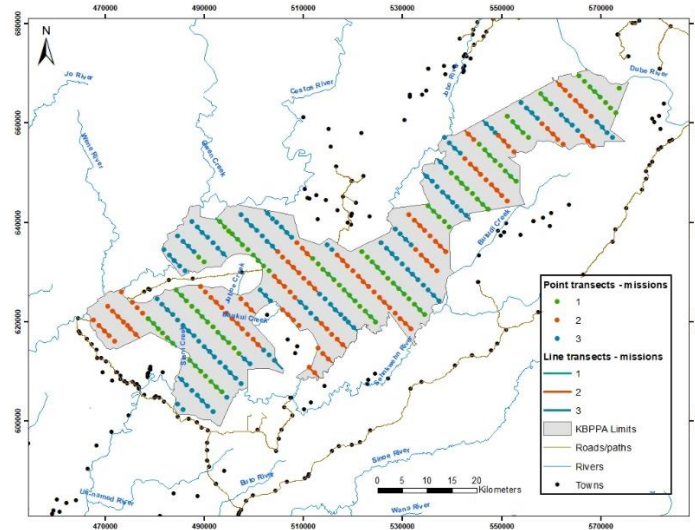
- 1) Grebo-Krahn National Park (NP) - GKNP
- 2) Sapo NP - SNP
- 3) Proposed Kwa NP - PKNP
- 4) Gola Forest NP - GFNP
- 5) Foya PPA - FPPA
- 6) Lake Piso Multiple Sustainable Use Reserve – LPSMUR
- 7) Cestos-Senkwehn PPA





# WCF Liberia – Biomonitoring

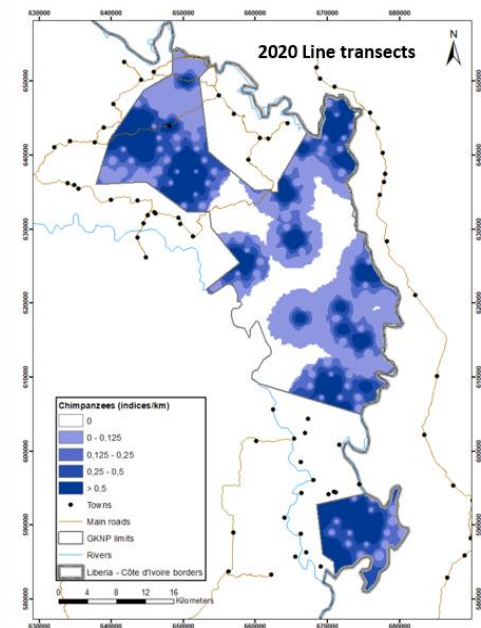
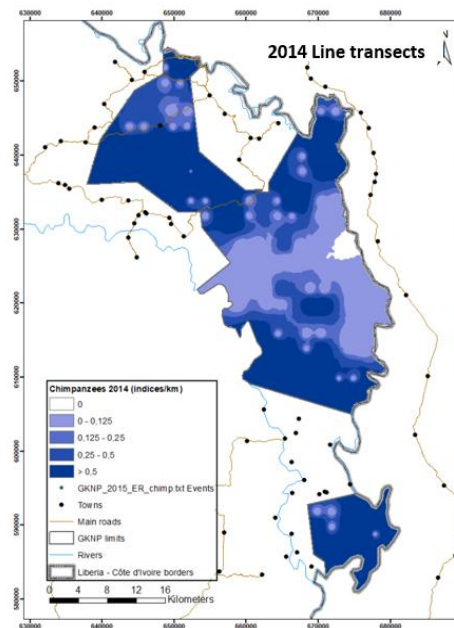
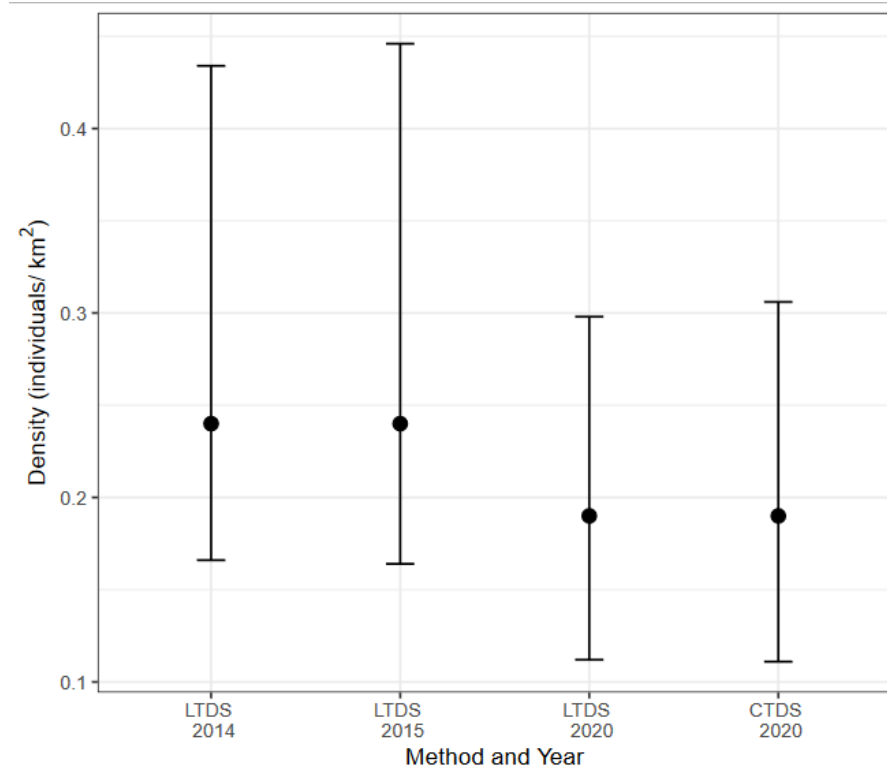
- Camera-trap distance sampling & line transects in Proposed Kwa National Park, Grebo-Krahn National Park, in the future also in Sapo National Park;
- Strong support from Ivorian WCF team;
- Camera trap videos analyzed by Abidjan team.



# WCF Liberia – Biomonitoring Grebo-Krahn National Park

- Highly threatened park (4.75 illegal human activities/km);
- Chimpanzee population seem to be declining over the years and have a more restricted distribution:

Method	Year	Abundance	Density	CV	95% CI
Line transects	2014	257	0.24	29	0.166-0.434
	2015	259	0.24	26	0.164-0.446
	2020	175	0.19	26	0.112-0.298
Camera traps	2020	177	0.19	35	0.111-0.306



**Chimpanzees signs are covering 98.6% of Grebo-Krahn National Park in 2014 and only 78.9% in 2020.**

# WCF Liberia - Community Ecoguard Program (local and national)

Currently, 38 ecoguard teams active at 6 protected areas in Liberia:

- WCF has 8 teams in Grebo-Krahn National Park, 10 teams in proposed Kwa National Park, 3 teams in tourism zone of Sapo National Park;
- WCF with SCNL & RSPB has 2 teams in Lake Piso, 10 teams in Gola Forest, 5 teams in Foya;
- In total, 174 community ecoguards, incl. 73 women, are patrolling with 38 team leaders from the Forestry Development Authority (FDA);
- Every community member receives USD 150 per mission (bi-monthly missions);
- Strong promotion of women working as community ecoguards;

WCF gives support for the national SMART database.



# WCF Liberia - Community Ecoguard Program

## Auxiliary program to support FDA law enforcement in Grebo-Krahn National Park (GKNP)

- 12 auxiliaries from local communities (previous ecoguards and existing auxiliaries) trained in law enforcement alongside Forestry Development Authority (FDA);
- will support law enforcement patrols, as FDA only has 3 rangers at GKNP, and since the GKNP establishment, no regular law enforcement patrols happened;
- use information from community ecoguards to plan patrols;
- 2023 pilot program for the entire Liberia, to improve law enforcement in protected areas.



# WCF Liberia - Community Ecoguard Program

## Grebo-Krahn National Park – January to December 2023

Number of patrols completed: 32

Total distance covered: 902.77 km

Number of human activities observed: 2,858  
(3.15 signs/km)

Number of hunting activities observed: 2,547  
(3.03 signs/km)

Number of wildlife observations: 595

Number of awareness meetings held: 57

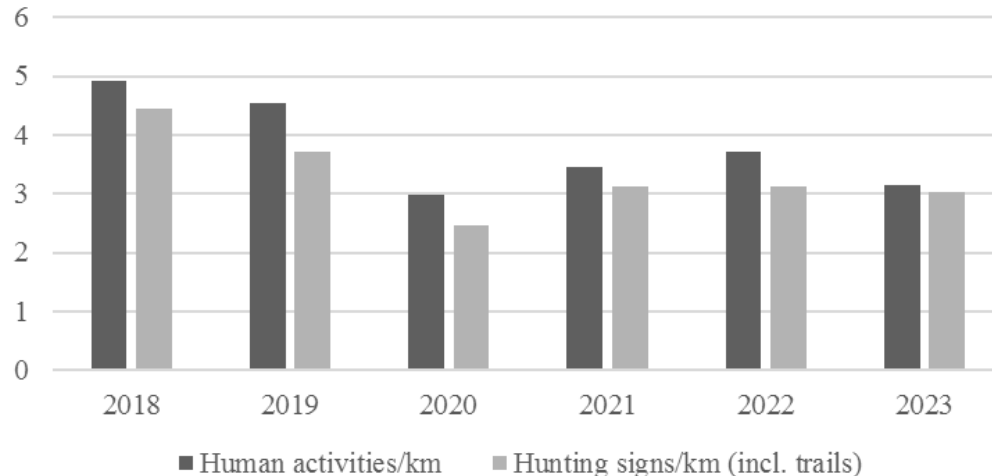
Number of people sensitized: 626



Community Ecoguard Awareness meeting around Grebo-Krahn National Park.

In December 2023 big awareness campaign with traditional leaders.

Human & hunting activities observed in GKNP for the past 6 years



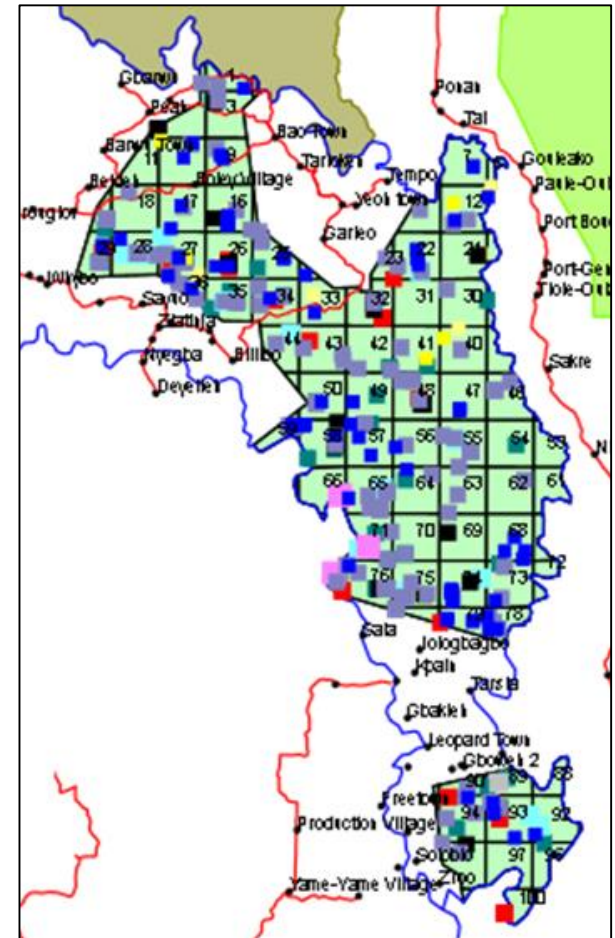
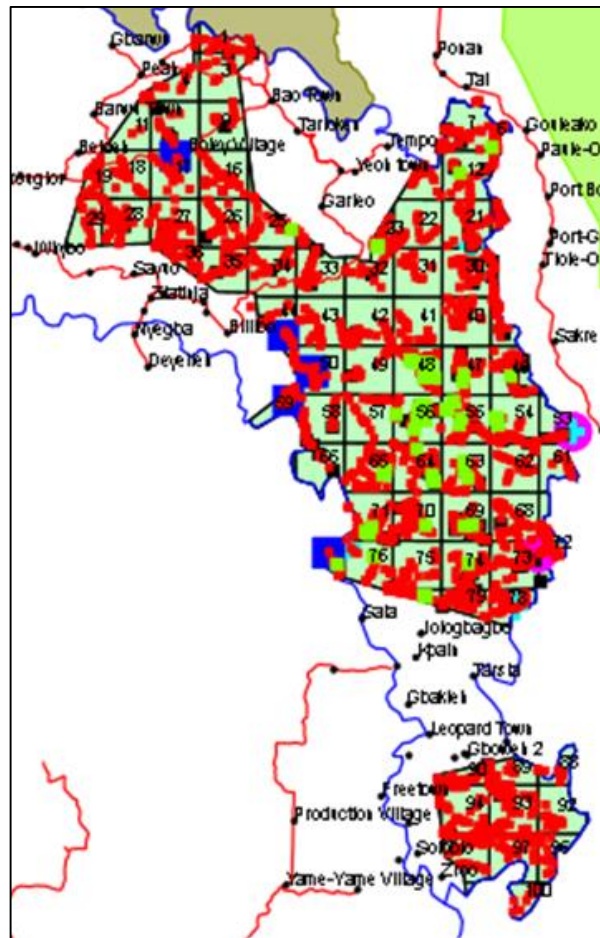
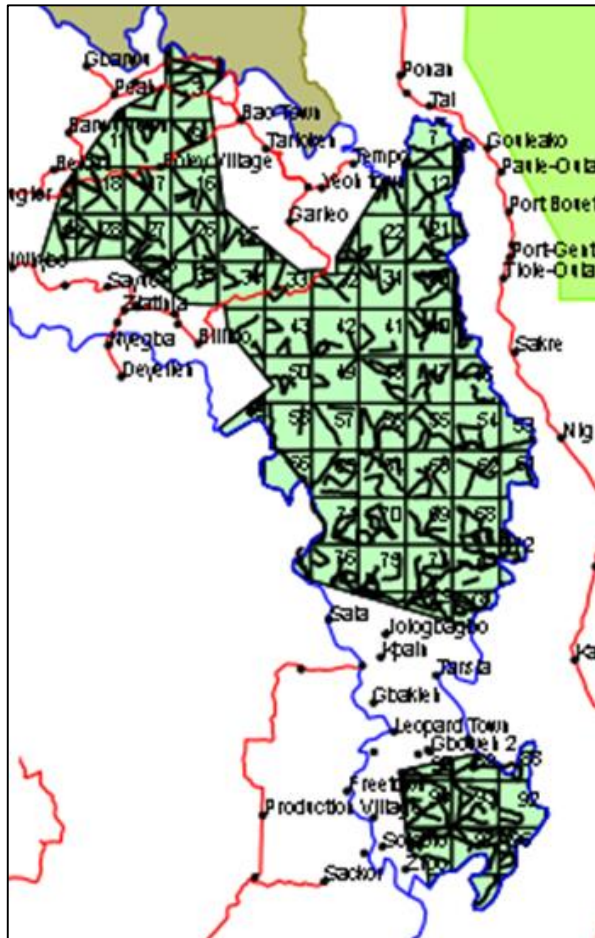
# WCF Liberia - Community Ecoguard Program

## Grebo-Krahn National Park – January to December 2023

Patrol coverage

Human activities

Wildlife



SMART data collected by Community Ecoguards.

# WCF Liberia - Community Ecoguard Program

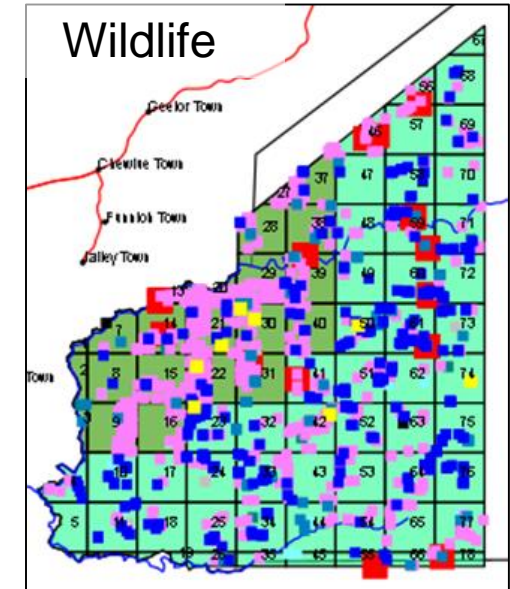
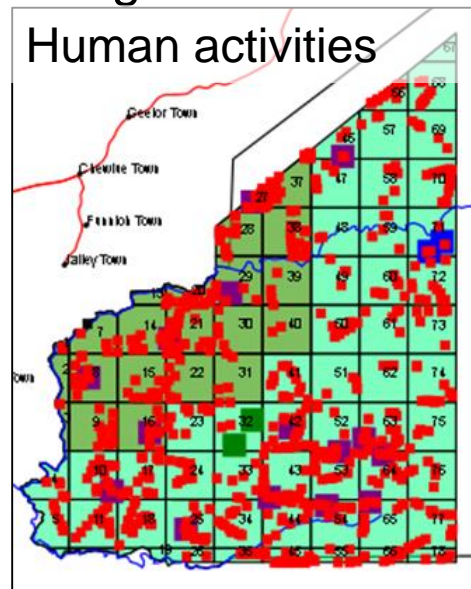
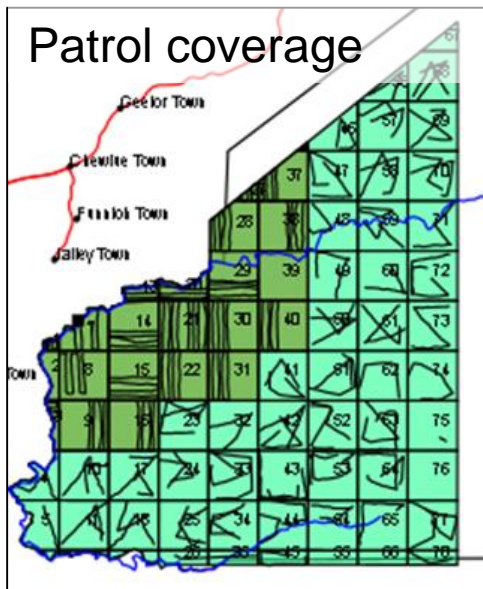
**16 patrols in ecotourism zone of Sapo National Park** in 2023 to identify tourism attractions and ensure a safe tourism zone by 3 ecoguard teams:

- Total distance covered: 446.8 km;
- Number of human activities observed: 846 (1.89 signs/km);
- Number of wildlife observations: 1,652;
- New tourism attractions identified (waterfalls, rocks, etc.).

Sapo Ecolodge



SMART data collected by ecoguards



# WCF Liberia – Sapo Ecolodge

## Sapo Ecolodge

Contact: [sapoecolodge@gmail.com](mailto:sapoecolodge@gmail.com)

Promoting Community-Based Ecotourism at Protected Areas to ensure long-term benefits for local forest communities



The new Sapo Ecolodge is located at the edge of Sapo National Park, close to the park's headquarters at Jalay Town, Sinoe County. There are 3 chalets, 2 platforms for tents, 2 outside bathrooms and 1 eating platform. The Sapo Ecolodge is open and the team is waiting to host you!



**Empowering Local Communities**  
Community members from around Sapo National Park have been trained to actively participate and lead on tourism activities, with a focus on local women. They work at the Sapo Ecolodge and have been trained as tourist guides and caterers. A local cultural troupe was trained that now can offer traditional dancing, drama and story telling to tourists. Local women also received literacy and business training to build up a conservation enterprise that will partially manage tourism-related activities.



### Building Sustainable Partnerships

The Wild Chimpanzee Foundation signed a Memorandum of Understanding with the Liberian Forestry Development Authority, to establish a long-term partnership for the promotion of ecotourism activities at Sapo National Park, ensuring strong involvement of local community members. Further collaboration exists with Libassa Ecolodge and local CSOs and NGOs, and business relationships are being established with national and international tour operators.

### Activities to do at Sapo National Park and Sapo Ecolodge:

- Enjoy nature and relax!!!
- Forest hiking
- Bird Watching
- Boat tour on Sinoe River
- Cultural program
- Cooking, craft, dancing and drumming classes

- Community-based ecotourism project
- Co-management
- 11 community members employed at Sapo Ecolodge



### Sapo Women Conservation Enterprise

- 10 women received basic literacy and business skills training, 4 are running the Sapo entertainment center
- Conservation Enterprise will be officially set up with Universal Outreach Foundation, the women will be involved in ecotourism activities, grow fruits and vegetables, sell hand crafts and offer courses.



## WCF Liberia - Community livelihood support

- Extension of beekeeping activities from Grebo-Krahn National Park to proposed Kwa National Park to add 100 beekeepers and set up conservation enterprises;
- Livelihood assesment at proposed Kwa National Park to set up 10 new agriculture projects with local women;
- Small scale infrastructure, e.g. solar street lights, hand pump water wells;
- Conservation-friendly agriculture (Grebo-Krahn National Park, proposed Kwa National Park)
- Village Savings and Loan Associations
- Oil-rich seeds (trade to Côte d'Ivoire)
- Ecotourism at the Sapo Ecolodge continued with support women conservation enterprise, 58 tourists visited Sapo Ecolodge in 2023.



## WCF Liberia - Community Volunteer Program - female bushmeat sellers

- Supports local women to change from illegal bushmeat trade to legal businesses, thereby reduces demand for bushmeat;
- Women are trained in the law, protected species, zoonotic diseases, general conservation principles and communication;
- Help to raise awareness in their markets to educate others;
- Was successfully piloted with 34 women in Monrovia 2020-2022, where bushmeat sale reduced by 50% on average in 28 markets;
- Now national program with 300 women in 10 major bushmeat hubs, 234 women already changed business.



# WCF Liberia - Gazettement for Kwa National Park

- All steps up to public notice completed, strictly following the principles of Free Prior and Informed Consent (FPIC)
- Draft gazettelement package submitted in May 2023
- Kwa National Park: 214,226 ha (largest protected area in Liberia)
- Regional and national validation done in June 2023
- 60 days public notice of intent from 28 June to 27 August

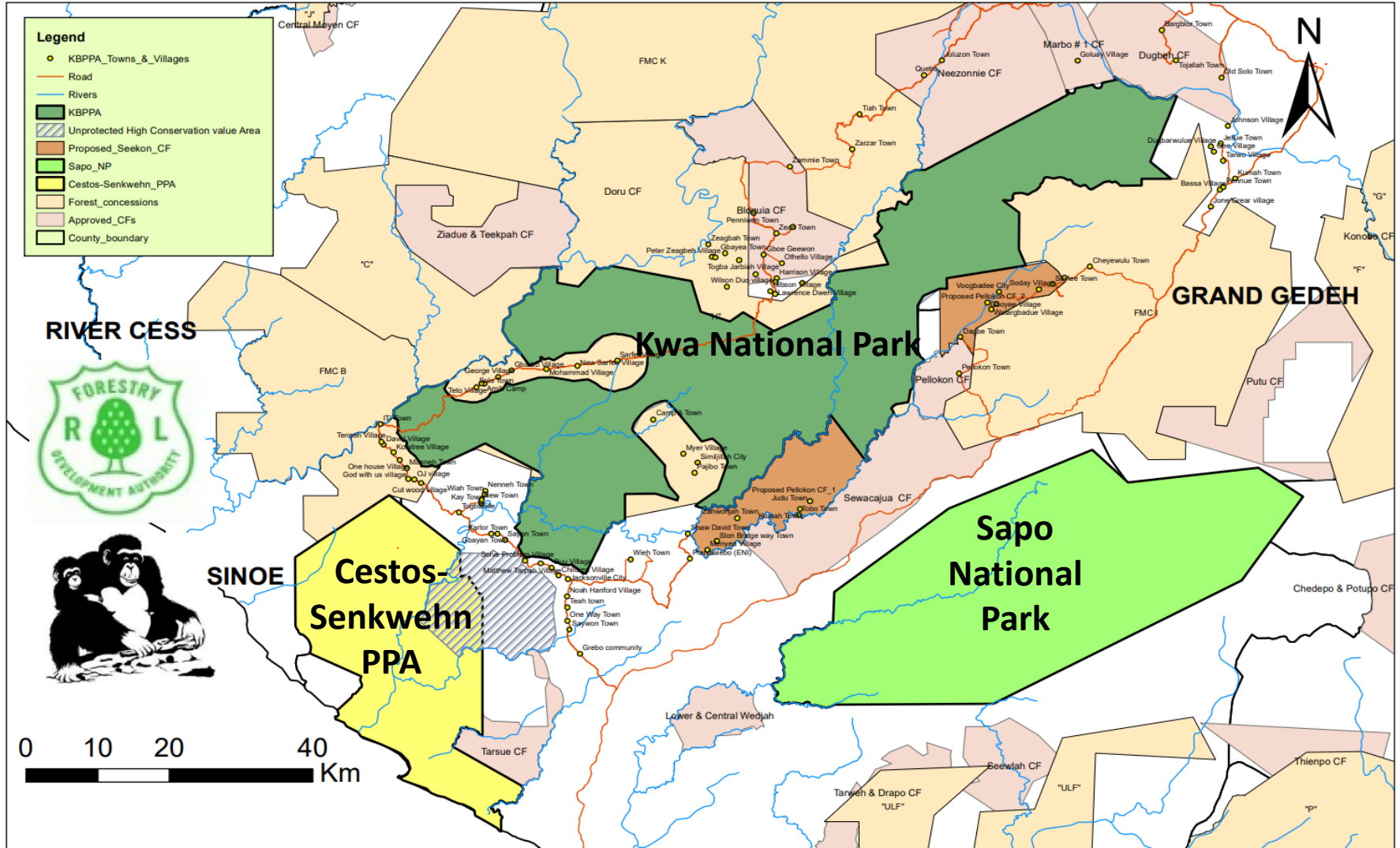
Top priority for first half of 2024 - steps to be completed:

- 1) Restart engagement with new government and lawmakers;
- 2) Key steps of Customary Land Formalization;
- 3) Approval of gazettelement package FDA board of Directors;
- 4) Submission to President's office;
- 5) Passing into law by legislature (House of Representatives & Senate).



# WCF Liberia - Gazettement for Kwa National Park

After completion of process, FDA decided to cut off 22,020 ha, of which 7,671 ha overlap with Cestos-Senkwehn PPA. Current size of Kwa National Park is **214,226 ha**.



# WCF Liberia - Community engagement & awareness

- Several awareness events, e.g. World Chimpanzee Day;
- Wildlife clubs in 27 local schools (Grebo-Krahn National Park, proposed Kwa National Park, Sapo National Park);
- Soccer and kickball games;
- Ex-bushmeat sellers drama team.



## WCF Liberia – Capacity building

- More than 320 people trained in 2023 (various topics);
- Community ecoguard refresher training for Grebo-Krahn National Park;
- Forest patrol training with South African Wildlife College in Sierra Leone;
- Recruitment training for 12 new ecoguards at Grebo-Krahn National Park (incl. 5 women);
- Recruitment training for 10 new tourist ecoguards at Sapo National Park (all women);
- Refresher and Recruitment training for ecoguards at Grebo-Krahn National Park;
- Training for Wildlife Crime Task Force focal persons;
- Internship program with Forestry training Institute and others.



## WCF Liberia – new or re-vived activities 2024

- Renewed support for the national Wildlife Crime Task Force,
- Mitigation of Human-Wildlife Conflict,
- Support for wildlife sanctuary and elephant rehabilitation site,
- Formalized school curriculum on conservation with Ministry of Education & training for wildlife club facilitators,
- Intense capacity building for Protected Area Division of FDA,
- Co-management & decentralization of protected area management,
- Development REDD+ project,
- Infrastructure development at protected areas,
- Construction of research site at Grebo-Krahn National Park and proposed Kwa National Park,
- Increased visibility,
- Theater awareness (cocoa encroachment).



# Thank you !





Grants and partners:



Rettet den Regenwald e.V.



Bundesministerium für wirtschaftliche Zusammenarbeit und Entwicklung



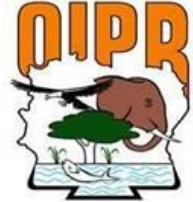
British Embassy Monrovia



USAID FROM THE AMERICAN PEOPLE



1% FOR THE PLANET



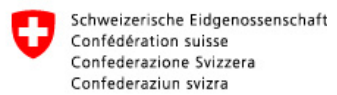
Liberia Forest Sector Project



giz



ELRECO



Elephant Research and Conservation

Zoo am Meer Bremerhaven GmbH



CSRS Centre Suisse de Recherches Scientifiques en Côte d'Ivoire



CRITICAL ECOSYSTEM PARTNERSHIP FUND

